



Sun Ray™ Server Software 3.1.1 Installation and Configuration Guide

for the Linux Operating System

Sun Microsystems, Inc.
www.sun.com

Part No. 819-6685-10
October 2006 Revision A

Copyright 2002—2006, Sun Microsystems, Inc., 4150 Network Circle, Santa Clara, California 95054, U.S.A. All rights reserved.

Sun Microsystems, Inc. has intellectual property rights relating to technology embodied in the product that is described in this document. In particular, and without limitation, these intellectual property rights may include one or more of the U.S. patents listed at <http://www.sun.com/patents>, and one or more additional patents or pending patent applications in the U.S. and in other countries.

This document and the product to which it pertains are distributed under licenses restricting their use, copying, distribution, and decompilation. No part of the product or of this document may be reproduced in any form by any means without prior written authorization of Sun and its licensors, if any.

Third-party software, including font technology, is copyrighted and licensed from Sun suppliers.

Parts of the product may be derived from Berkeley BSD systems, licensed from the University of California. UNIX is a registered trademark in the U.S. and other countries, exclusively licensed through X/Open Company, Ltd.

Sun, Sun Microsystems, the Sun logo, Sun Ray, Sun WebServer, Sun Enterprise, Ultra, UltraSPARC, SunFastEthernet, Sun Quad FastEthernet, Java, JDK, HotJava, and Solaris are trademarks, registered trademarks, or service marks of Sun Microsystems, Inc. in the U.S. and other countries. All SPARC trademarks are used under license and are trademarks or registered trademarks of SPARC International, Inc. in the U.S. and other countries. Products bearing SPARC trademarks are based upon an architecture developed by Sun Microsystems, Inc.

Netscape is a trademark or registered trademark of Netscape Communications Corporation.

The OPEN LOOK and Sun™ Graphical User Interface was developed by Sun Microsystems, Inc. for its users and licensees. Sun acknowledges the pioneering efforts of Xerox in researching and developing the concept of visual or graphical user interfaces for the computer industry. Sun holds a non-exclusive license from Xerox to the Xerox Graphical User Interface, which license also covers Sun's licensees who implement OPEN LOOK GUIs and otherwise comply with Sun's written license agreements.

Federal Acquisitions: Commercial Software—Government Users Subject to Standard License Terms and Conditions.

Use, duplication, or disclosure by the U.S. Government is subject to restrictions set forth in the Sun Microsystems, Inc. license agreements and as provided in DFARS 227.7202-1(a) and 227.7202-3(a) (1995), DFARS 252.227-7013(c)(1)(ii) (Oct. 1998), FAR 12.212(a) (1995), FAR 52.227-19, or FAR 52.227-14 (ALT III), as applicable.

DOCUMENTATION IS PROVIDED “AS IS” AND ALL EXPRESS OR IMPLIED CONDITIONS, REPRESENTATIONS AND WARRANTIES, INCLUDING ANY IMPLIED WARRANTY OF MERCHANTABILITY, FITNESS FOR A PARTICULAR PURPOSE OR NON-INFRINGEMENT, ARE DISCLAIMED, EXCEPT TO THE EXTENT THAT SUCH DISCLAIMERS ARE HELD TO BE LEGALLY INVALID.

Copyright 2002—2006, Sun Microsystems, Inc., 4150 Network Circle, Santa Clara, California 95054, Etats-Unis. Tous droits réservés.

Sun Microsystems, Inc. a les droits de propriété intellectuelle relatants à la technologie incorporée dans le produit qui est décrit dans ce document. En particulier, et sans la limitation, ces droits de propriété intellectuelle peuvent inclure un ou plus des brevets américains énumérés à <http://www.sun.com/patents> et un ou les brevets plus supplémentaires ou les applications de brevet en attente dans les Etats-Unis et dans les autres pays.

Ce produit ou document est protégé par un copyright et distribué avec des licences qui en restreignent l'utilisation, la copie, la distribution, et la décompilation. Aucune partie de ce produit ou document ne peut être reproduite sous aucune forme, par quelque moyen que ce soit, sans l'autorisation préalable et écrite de Sun et de ses bailleurs de licence, s'il y en a.

Le logiciel détenu par des tiers, et qui comprend la technologie relative aux polices de caractères, est protégé par un copyright et licencié par des fournisseurs de Sun.

Des parties de ce produit pourront être dérivées des systèmes Berkeley BSD licenciés par l'Université de Californie. UNIX est une marque déposée aux Etats-Unis et dans d'autres pays et licenciée exclusivement par X/Open Company, Ltd.

Sun, Sun Microsystems, le logo Sun, Sun Ray, Sun WebServer, Sun Enterprise, Ultra, UltraSPARC, SunFastEthernet, Sun Quad FastEthernet, Java, JDK, HotJava, et Solaris sont des marques de fabrique ou des marques déposées, ou marques de service, de Sun Microsystems, Inc. aux Etats-Unis et dans d'autres pays.

Toutes les marques SPARC sont utilisées sous licence et sont des marques de fabrique ou des marques déposées de SPARC International, Inc. aux Etats-Unis et dans d'autres pays. Les produits portant les marques SPARC sont basés sur une architecture développée par Sun Microsystems, Inc.

Netscape est une marque de Netscape Communications Corporation aux Etats-Unis et dans d'autres pays.

L'interface d'utilisation graphique OPEN LOOK et Sun™ a été développée par Sun Microsystems, Inc. pour ses utilisateurs et licenciés. Sun reconnaît les efforts de pionniers de Xerox pour la recherche et le développement du concept des interfaces d'utilisation visuelle ou graphique pour l'industrie de l'informatique. Sun détient une licence non exclusive de Xerox sur l'interface d'utilisation graphique Xerox, cette licence couvrant également les licenciées de Sun qui mettent en place l'interface d'utilisation graphique OPEN LOOK et qui en outre se conforment aux licences écrites de Sun.

LA DOCUMENTATION EST FOURNIE “EN L'ETAT” ET TOUTES AUTRES CONDITIONS, DECLARATIONS ET GARANTIES EXPRESSES OU TACITES SONT FORMELLEMENT EXCLUES, DANS LA MESURE AUTORISEE PAR LA LOI APPLICABLE, Y COMPRIS NOTAMMENT TOUTE GARANTIE IMPLICITE RELATIVE A LA QUALITE MARCHANDE, A L'APTITUDE A UNE UTILISATION PARTICULIERE OU A L'ABSENCE DE CONTREFAÇON.

Contents

Preface xi

1. Overview 1

Media Formats 1

Installation Flow Chart 2

Configuration Flow Chart 4

2. Preparing for Installation 5

Hardware Requirements 6

Disk Space 6

Software Requirements 7

Java Runtime Environment (JRE) 7

Linux Operating System Versions 7

SuSE Linux Enterprise Server (SLES) 9 7

Red Hat Enterprise Linux Advanced Server (RHEL AS)
4 Update 3 7

Sun Ray Administration Tool 8

Sun Ray Port Requirements 8

Sun Ray Data Store 8

Web Browser Requirements 9

3. Installation	11
▼ To Install Sun Ray Server Software	11
4. Preparing to Upgrade Sun Ray Server Software	15
Requirements	15
Failover Groups	16
▼ To Disconnect the Sun Ray Server From the Interconnect	17
Preserving Configuration Data	18
▼ To Preserve the Sun Ray Server Configuration	18
Unconfiguring the Sun Ray Server	20
▼ To Unconfigure Sun Ray Server Software	20
Removing the Software	20
▼ To Remove Sun Ray Server Software	20
5. Upgrading	23
Upgrading the Sun Ray Server	23
▼ To Upgrade the Sun Ray Server	23
6. Preparing for Configuration	27
Configuration Tasks	27
Configuration Worksheets	29
Basic Network Topology	32
7. Configuration	35
Configuring the Sun Ray Server	35
▼ To Configure a Dedicated Sun Ray Interconnect Interface	35
▼ To Configure the Sun Ray Server on a LAN	38
▼ To Turn the Sun Ray LAN Connection On or Off	39
▼ To Configure Sun Ray Server Software	40
▼ To Configure the Sun Ray Server Hierarchy	41

- ▼ To Synchronize Primary and Secondary Sun Ray Servers 43
- ▼ To Synchronize the Sun Ray DTU Firmware 43
- ▼ To Configure an HTTP Server Manually 43
- ▼ To Reboot the Sun Ray Server 45

A. Additional Information 47

Modified System Files 47

utinstall Error Messages 48

Index 49

Figures

FIGURE 1-1	Installation/Upgrade Flow Chart	2
FIGURE 1-2	Sun Ray Configuration for Various Types of Networks	4
FIGURE 6-1	Dedicated Private Non-routed Sun Ray Network	33
FIGURE 6-2	Shared Network with Non-routed Sun Ray DTUs	33
FIGURE 6-3	Shared Routed Network	34

Tables

TABLE 2-1	Sun Ray Server Software Disk Space Requirements	6
TABLE 4-1	Summary of Upgrade Requirements	16
TABLE 6-1	Basic Parameter Worksheet for Dedicated Interconnect Configuration	29
TABLE 6-2	Local Interface Parameter Worksheet for LAN Configuration	31
TABLE 6-3	Sun Ray Server Configuration Failover Parameters	32
TABLE 6-4	First and Last Unit Address in a Failover Group	32
TABLE A-1	<code>utinstall</code> Error Messages	48

Preface

The Sun Ray Server Software 3.1.1 Installation and Configuration Guide for the Linux Operating System provides instructions for installing, upgrading, and configuring a system of Sun Ray™ DTUs and their server or servers. It is written for system and network administrators who are already familiar with the Sun Ray™ computing paradigm and have substantial networking knowledge. This guide may also be useful for those interested in customizing their Sun Ray systems.

Before You Read This Book

This guide assumes that you have access to the Sun Ray Server Software 3.1.1 CD or the Electronic Software Download (ESD).

How This Book Is Organized

Chapter 1 gives a brief overview of installation, upgrade, and configuration along with two flow charts to help make it easier to get the latest Sun Ray Server Software up and running.

Chapter 2 describes the requirements for installation.

Chapter 3 steps through the installation process.

Chapter 6 describes configuration requirements. It includes a brief discussion of network topology and a set of worksheets.

Chapter 7 steps through the configuration procedures.

Appendix A contains all the material that did not fit neatly into the chapters above. It includes, among other items, error messages from the installation script.

This manual also contains an index.

Using UNIX Commands

This document does not contain information on basic UNIX® commands and procedures, such as shutting down the system, booting the system, or configuring devices. This document does, however, contain information about specific Sun Ray system commands.

Typographic Conventions

Typeface	Meaning	Examples
AaBbCc123	The names of commands, files, and directories; on-screen computer output	Edit your <code>.login</code> file. Use <code>ls -a</code> to list all files. % You have mail.
AaBbCc123	What you type, when contrasted with on-screen computer output	% su Password:
<i>AaBbCc123</i>	Book titles, new words or terms, words to be emphasized	Read Chapter 6 in the <i>User's Guide</i> . These are called <i>class</i> options. You <i>must</i> be superuser to do this.
	Command-line variable; replace with a real name or value	To delete a file, type <code>rm filename</code> .

Shell Prompts

Shell	Prompt
C shell	<i>machine_name</i> %
C shell superuser	<i>machine_name</i> #
Bourne shell and Korn shell	\$
Bourne shell and Korn shell superuser	#

Related Documentation

Application	Title	Part Number
Administration	<i>Sun Ray Server Software 3.1.1 Administrator's Guide for the Linux Operating System</i>	819-819-6685-10
Release Notes	<i>Sun Ray Server Software 3.1.1 Release Notes for the Linux Operating System</i>	819-6688-10

Accessing Sun Documentation

You can view, print, or purchase a broad selection of Sun documentation, including localized versions, at:

<http://www.sun.com/documentation>

Sun Welcomes Your Comments

Sun is interested in improving its documentation and welcomes your comments and suggestions. You can email your comments to Sun at:

docfeedback@sun.com

Please include the part number of your document (819-2388-10) in the subject line of your email.

Overview

This guide describes how to install, upgrade, configure, and remove Sun Ray™ Server Software 3.1.1. It also provides instructions for upgrading to the appropriate version of Linux.

The reader is presumed to be familiar with basic Linux commands and to have experience in network configuration and administration. Technical information and procedures are presented with a command-line interface.

For a visual overview of the tasks to be performed, please look at the decision flow chart (FIGURE 1-1) on the next page. Following the procedures in this guide can help you to avoid unnecessary problems when you install, upgrade, or configure Sun Ray systems.

Media Formats

Sun Ray Server Software 3.1.1 is available on CD-ROM and ESD (electronic software download). If you download the software electronically, then when instructions and procedures in this guide ask you to change to the image directory on the CD-ROM, please change instead to the image directory under the download directory. Commands issued in either file system should execute properly.

Installation Flow Chart

The following diagram shows the key decisions you should take before performing an installation or upgrade.

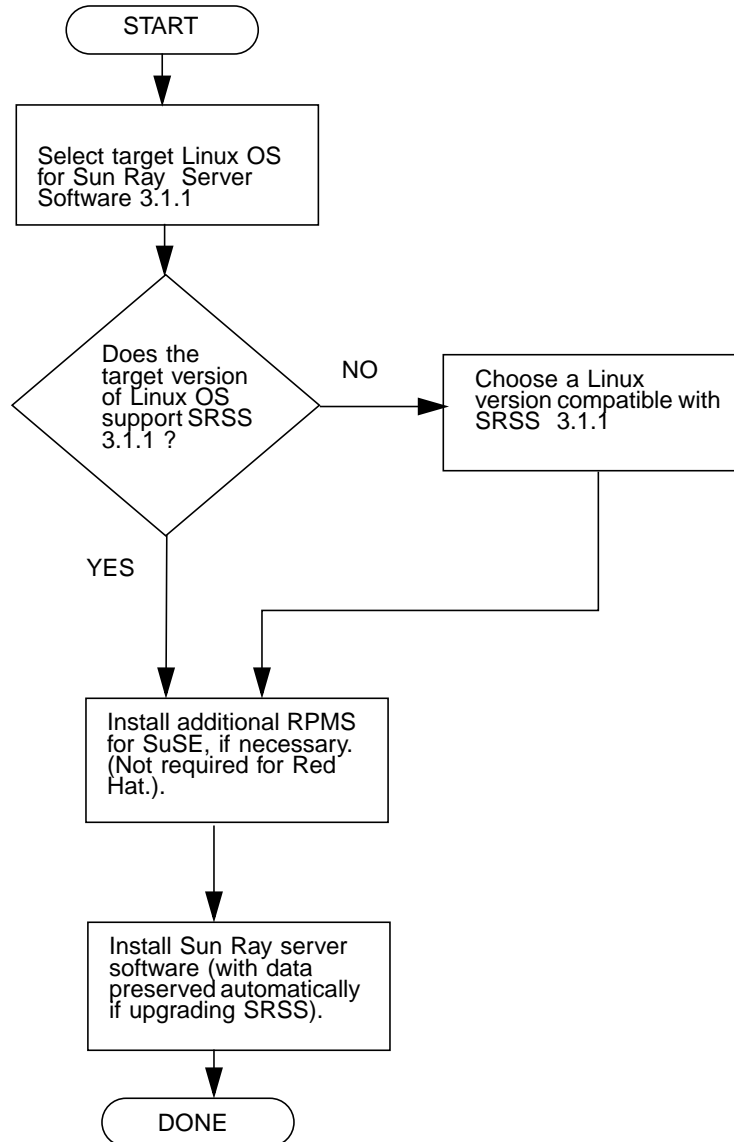


FIGURE 1-1 Installation/Upgrade Flow Chart

- If you are installing Sun Ray Server Software for the first time, go to “Preparing for Installation” on page 5.
- If you are creating a failover group from both new and existing Sun Ray servers, see “To Configure the Sun Ray Server Hierarchy” on page 41.

Configuration Flow Chart

The following diagram shows the key decisions to take before configuring Sun Ray servers and DTUs on a network, or before configuring a network for Sun Rays.

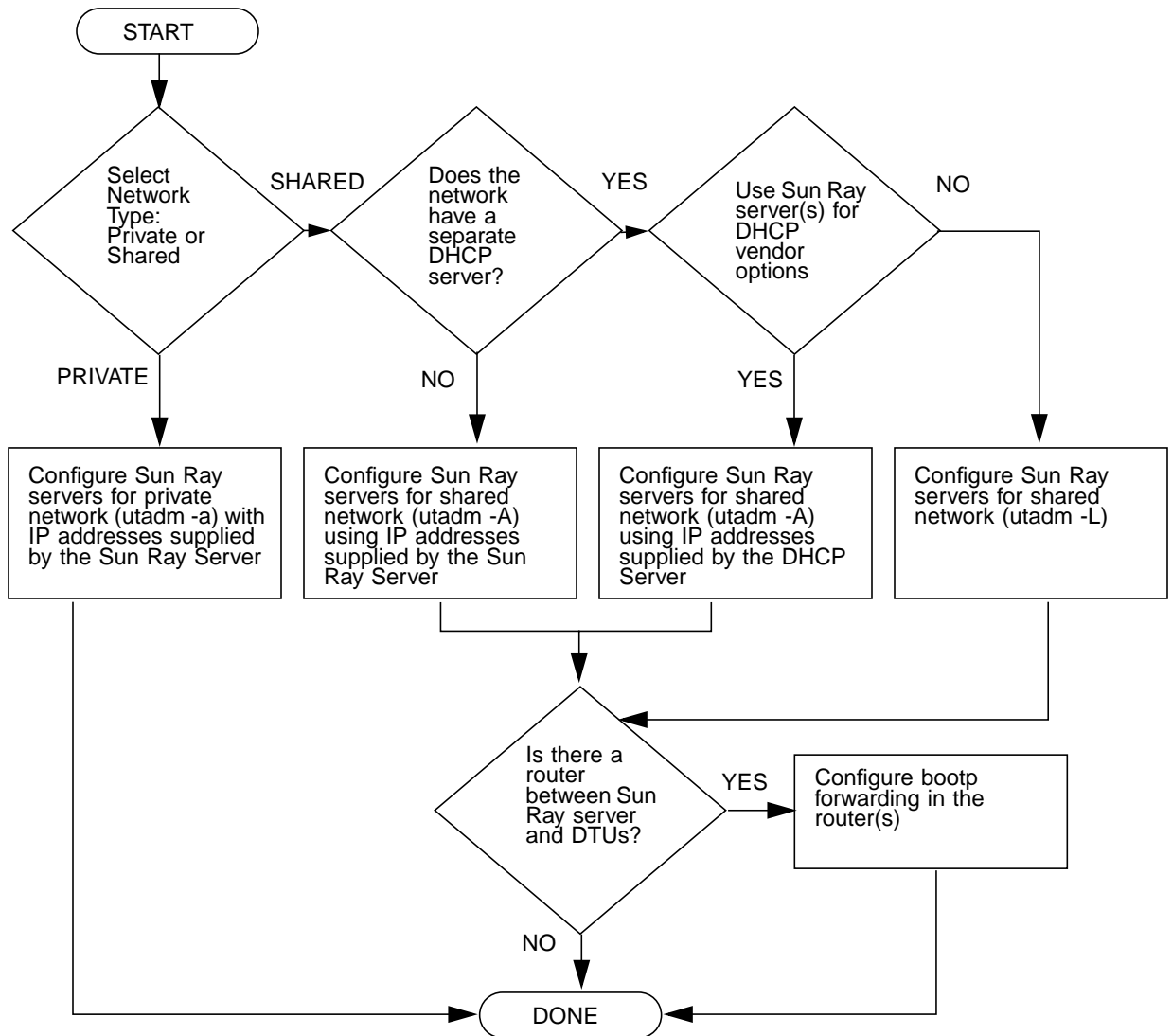


FIGURE 1-2 Sun Ray Configuration for Various Types of Networks

Preparing for Installation

The installation process is easy and straightforward; however, it is essential that you verify all requirements before you install Sun Ray Server Software 3.1.1. This chapter describes what you need to do.

Topics in this chapter include:

- “Hardware Requirements” on page 6
- “Software Requirements” on page 7

Before you install Sun Ray Server Software, you should:

- Verify the operating environment.

Make sure that you are running the desired supported operating system on your system.

Verify that you have installed the latest operating system updates.

- Verify system requirements.

Make sure that the system(s) on which you plan to install the software fulfills the necessary hardware and software requirements.

Note – Since SRSS 3.1, the `utinstall` script does not automatically add Sun Ray information to the `crontab`, `syslog`, and `PAM` services as earlier versions did; instead, it adds them upon the first reboot after installation or upgrade.

Hardware Requirements

Disk Space

Note – The suggested server configuration includes approximately 50-100 MB of swap space per user.

The standard installation of Sun Ray Server Software requires at least 95 MB of disk space. TABLE 2-1 lists the disk space requirements for specific directories:

TABLE 2-1 Sun Ray Server Software Disk Space Requirements

Product	Default Installation Path	Requirements
Sun Ray core software	/	1 Mbyte
	/opt	20 Mbytes
	/var/log	1 Mbyte
	/var/tmp	5 Mbytes
	/var/opt/SUNWut	Allow enough disk space for the log files.
Sun Ray Data Store 2.2	/opt/SUNWut/srds	4 Mbytes in /opt
	/etc/opt	0.1 Mbytes in /etc
	/var/opt/SUNWut/srds	Allow enough disk space for the database and log files. For 1,000 entries, allocate roughly 1.5 Mbytes of disk space, 64 Mbytes of RAM, and 128 Mbytes of swap space.
JRE 1.4.2 or later		60 Mbytes
English docs (optional)	/opt	8.5 Mbytes
Non-English docs (optional)	/opt	8.5 Mbytes for each locale

Software Requirements

Java Runtime Environment (JRE)

SRSS 3.1.1 requires JRE version 1.4.2 or later. The latest Java release is available at:
<http://java.sun.com/j2se>

JRE version 1.4.2 is also bundled on the SRSS 3.1.1 CD, in the Supplemental directory.

Linux Operating System Versions

Sun Ray Server Software 3.1.1 runs on:

- SuSE Linux Enterprise Server (SLES) 9 at the SP3 (Service Pack 3) level or later
- Red Hat Enterprise Linux Advanced Server (RHEL AS) 4 Update 3

SuSE Linux Enterprise Server (SLES) 9

All packages are required and must be installed. During installation, select **Full Selection** from the Software Selection screen, then select all check boxes for Package Selection. In particular, be sure to install `tftp` and Apache 1.3.29.

Note – Service Pack 3 or later must be installed.

Red Hat Enterprise Linux Advanced Server (RHEL AS) 4 Update 3

All packages are required, so it is best to configure the Sun Ray Server on a system on which all packages of RHEL AS 4 are installed.

During installation, select the **Customize** option, then select the check box for **Everything** in the Package Selection panel.



Caution – The Red Hat installation script asks whether to start a graphical console. Be sure to answer “Yes”, otherwise Sun Ray startup scripts and X initialization scripts may fail to run.

Sun Ray Administration Tool

The Sun Ray Administration Tool (Admin GUI) requires that a web server be installed and running on each Sun Ray Server.

If an Apache HTTP Server is detected, the `utconfig` script asks whether it should be configured automatically. If you answer Yes, then it is so configured.

If you answer No, then the configuration is stored in `/etc/opt/SUNWut/http/http.conf`. You can then use this file to configure the HTTP server manually. If you want to use a web server other than Apache, see “To Configure an HTTP Server Manually” on page 43.

The Apache HTTP Server is available at the following URL:
`http://httpd.apache.org`

The Sun Ray configuration script uses port 1660 for the Sun Ray Administration Tool (Admin GUI) by default. If this port is unavailable, you can configure a new port while running the `utconfig` script.

For information on configuring a web server manually, see “To Configure an HTTP Server Manually” on page 43.

Sun Ray Port Requirements

When you configure a Sun Ray server in a failover environment, service port 7012 is used by default.

Sun Ray Data Store

If you already have an LDAP (Lightweight Data Access Protocol) server configured on the Sun Ray server, it can coexist with Sun Ray Data Store; however, it must not use port 7012, which is reserved for use by the Sun Ray Data Store.

Web Browser Requirements

To view the Sun Ray Administration Tool (Admin GUI), you must have a web browser, such as Mozilla or Netscape™ Communicator, installed on the system that will display it.

The latest version of the Mozilla browser is available at:

<http://www.mozilla.org/download.html>

The latest version of the Netscape Communicator web browser is available at:

<http://www.netscape.com/download>

For instructions on manual configuration of a web server, see “To Configure an HTTP Server Manually” on page 43.

Installation

This chapter contains instructions for installing Sun Ray Server Software. If you are *upgrading* Sun Ray Server Software from an earlier version, please see “Preparing to Upgrade Sun Ray Server Software” on page 15.

▼ To Install Sun Ray Server Software

1. If you have already mounted the Sun Ray Server Software 3.1.1 CD-ROM locally or from a remote server, or if you have extracted the ESD files to an image directory, begin at Step 4.
2. As superuser, open a shell window on the Sun Ray server.

Tip – To avoid installation script errors that can occur if user environment settings are carried forward, use one of the following commands for superuser login instead of using the `su` command without arguments.:

```
% su -
```

```
% su - root
```

3. Insert the Sun Ray Server Software 3.1.1 CD-ROM.

If a file manager window opens, close it. The file manager CD-ROM window is not necessary for installation.

4. Change to the image directory. For example:

```
# cd /cdrom/cdrom0
```

5. Install Sun Ray Server Software:

```
# ./utinstall
```

The installation process begins. The script first displays the text of the Sun Software License Agreement and prompts you to accept its terms and conditions.

a. After reviewing the license agreement, answer *y* (yes) to the prompt.

After reporting the successful installation of SUNWuti package, Sun Ray core services, and the Sun Ray datastore, it prompts you to approve installation of L10N admin locales.

b. Answer *y* (yes) to the prompt.

The installation script then checks for the existence of Controlled Access Mode (kiosk) packages and prompts you for the location of the Java JRE 1.4.2 or later

- It then checks for the existence of a Gnome Display Manager (GDM).
- It prompts you to authorize the removal of an existing Gnome Display Manager and its replacement with a GDM that has been enhanced and optimized for Sun Ray server software.

c. Answer *y* (yes) to the prompt.

Note – If you answer *y* (yes) to the prompt, SRSS installation continues; if you answer *n* (no) to the prompt, the SRSS install process aborts.

- The `utinstall` script ends, indicating a log file is available at the following location:
 - `/var/log/utinstall.year_month_date_hour:minute:second.log`where the values displayed reflect a time stamp of when `utinstall` was started.

Note – For a listing of `utinstall` error messages, see “`utinstall` Error Messages” on page 48.

Tip – Check the log file. Many installation problems are reported in this file and are frequently overlooked.

6. If you have not already done so, reboot the Sun Ray server before trying to run `utadm` or `utconfig`.

```
# sync;sync;init 6
```

7. Go to “Preparing for Configuration” on page 27 for instructions how to prepare to configure and reboot the Sun Ray server.

If other systems need software installation, repeat the tasks appropriate for those systems.

Preparing to Upgrade Sun Ray Server Software

This chapter describes the preparations for *upgrading* from earlier versions of Sun Ray Server Software.

Topics in this chapter include:

- “Requirements” on page 15
- “Failover Groups” on page 16
- “Preserving Configuration Data” on page 18
- “Unconfiguring the Sun Ray Server” on page 20
- “Removing the Software” on page 20

Requirements

You can upgrade your current Sun Ray Server Software if you have purchased a new Sun Ray Server Software 3.1.1 Right-to-Use license or have a Sun Ray Server Software service contract that entitles you to upgrades.

Note – Before you upgrade Sun Ray Server Software, inform your users of your plans, and have them terminate their sessions. An effect of the upgrade procedure is that all active and suspended sessions are lost.

In addition, the `utinstall` script for SRSS 3.1.1 does not automatically add Sun Ray information to the `crontab`, `syslog`, and `PAM` services as earlier versions did; instead, it adds them upon the first reboot after installation or upgrade.

The following table summarizes your upgrade requirements.

TABLE 4-1 Summary of Upgrade Requirements

-
1. Preserve the configuration. Upgrading from previous releases of Sun Ray Server Software requires you to preserve the existing Sun Ray configuration manually. See “Preserving Configuration Data” on page 18.
 2. Run `utadm -l` and note the configuration for all existing Sun Ray subnetworks, then run `utadm -r` to unconfigure all active Sun Ray interfaces and remove all Sun Ray entries from the configuration databases.
 3. Unconfigure the server. Upgrading from earlier releases requires you to unconfigure the server manually. See “Unconfiguring the Sun Ray Server” on page 20.
 4. Remove the existing Sun Ray software. See “To Remove Sun Ray Server Software” on page 20.
 5. Upgrade Sun Ray Server Software. See “Upgrading the Sun Ray Server” on page 21.
-

Note – It is not necessary to uninstall the current Sun Ray Server Software to perform the upgrade.

Failover Groups

By configuring two or more Sun Ray servers in a failover group, you can reduce interruption of new service availability in the event that one server fails. If you plan to combine existing Sun Ray servers into a failover group, or to upgrade an existing failover group, please consider the following:

- Before you upgrade a given server, Sun Ray DTU users should terminate their sessions.

Tip – If it is not convenient to upgrade all servers in a large configuration at once, upgrade one or two servers at a time until the entire configuration is complete.

- For best results in groups of four or more servers, configure the primary server so that it serves only the Sun Ray Data Store. Configure the secondary servers so that they serve users directly in addition to serving the Data Store.
- To take advantage of new features in SRSS 3.1.1, do not mix different Sun Ray Server Software versions within a failover group. Failover groups that use more than one software version revert to the functionality of the earliest version.

- Using the Admin GUI to restart or reset Sun Ray services does not work across servers with different Sun Ray releases. For example, even if you use the Admin GUI to restart all the servers in a failover group that are running SRSS 3.1.1, you should still restart or reset any Sun Ray servers running earlier versions of SRSS manually. Please see the previous item.
- When you configure a new server with `utconfig`, the Sun Ray Data Store uses port 7012 by default. When you upgrade an existing Sun Ray server, however, the 2.1 Sun Ray Data Store continues to use the old LDAP port 389, which can create port conflicts.
- Turn off all firmware updates until all the servers in a failover group are upgraded. For instance:

```
# /opt/SUNWut/sbin/utfwadm -D -a -n all
```

Note – Even if you upgrade one or two servers per week, you must wait until all servers in the group are upgraded before you update their firmware.

- If your configuration is a dedicated, private interconnect, disconnect the server from the Sun Ray interconnect.

Note – See “To Configure the Sun Ray Server Hierarchy” on page 41 for instructions and Chapter 11 in the *Sun Ray Server Software 3.1.1 Administrator’s Guide* for a more general discussion of failover groups, including diagrams of failover topologies.

▼ To Disconnect the Sun Ray Server From the Interconnect

Caution – This procedure disconnects users from their sessions on the Sun Ray server. Make sure your users terminate their sessions before you continue.

1. As superuser, open a shell window on the Sun Ray server.
2. Disconnect the Sun Ray server from the Sun Ray interconnect:

```
# /opt/SUNWut/sbin/utadm -r
```

3. Perform one of the following tasks:

- If you need to upgrade or re-install the operating system, see “Preserving Configuration Data” on page 18.
- Otherwise, see “Upgrading the Sun Ray Server” on page 23.

Preserving Configuration Data

Preserving your existing configuration is not a requirement, but it is recommended.

The `utpreserve` script in the Sun Ray Server Software image directory preserves:

- X user settings
- Sun Ray Data Store
- Sun Ray configuration and log files
- Authentication Manager configuration files
- `utsettings` properties
- Failover group information

Note – The `utpreserve` script does not save *all* configuration files, so you must configure the Sun Ray interconnect interface, Sun Ray administration server, and SSL for the Administration Tool (optionally) after upgrading Sun Ray Server Software.

▼ To Preserve the Sun Ray Server Configuration

If you have already mounted the Sun Ray Server Software 3.1.1 CD-ROM locally or from a remote server, or if you have extracted the ESD files to an image directory, begin at Step 3.

Caution – Running the `utpreserve` script stops all Sun Ray daemons and services, including the Sun Ray Data Store, causing users to lose all of their sessions, both active and disconnected. Please inform them of your plans.

Depending on the size of your configuration, this procedure, including the operating system software upgrade, may take anywhere from five minutes to several hours or even more to complete.

1. **As superuser, open a shell window on the Sun Ray server.**
2. **Insert the Sun Ray Server Software 3.1.1 CD-ROM.**

If a file manager window opens, close it. It is not necessary for installation.

3. Change to the image directory. For example:

```
# cd /cdrom/cdrom0
```

4. Preserve the Sun Ray configuration:

```
# ./utpresave
```

The utpresave script warns that it will stop all Sun Ray services, consequently terminating all user sessions, and asks if it should continue.

Caution – Answering *y* terminates all user sessions, both active and disconnected.

5. Answer *y*.

The utpresave script:

- Stops the Sun Ray services and the Sun Ray Data Store daemon.
- Lists the files that are saved.
- Tars and compresses the entire list of files as the `/var/tmp/SUNWut.upgrade/preserve_version.tar.gz` file, where *version* is the currently installed version of Sun Ray Server Software.
- Ends, indicating that a log file is available at `/var/adm/log/utpresave.year_month_date_hour:minute:second.log`: where *year*, *month*, etc. are represented by numeric values reflecting the time utpresave was started.

Tip – Be sure to check this log file for errors that are frequently overlooked.

- Recommends that the `/var/tmp/SUNWut.upgrade/preserve_version.tar.gz` file be moved to a safe location before the operating system software upgrade.

6. Use NFS, FTP, or other means to copy the

`/var/tmp/SUNWut.upgrade/preserve_version.tar.gz`
file to a safe location on another server.

7. Make a tape backup of the Sun Ray server's file systems.

Unconfiguring the Sun Ray Server

To upgrade Sun Ray Server Software, you must first remove the replication configuration, then unconfigure the Sun WebServer™.

▼ To Unconfigure Sun Ray Server Software

1. As superuser, open a shell window on the Sun Ray server.
2. Remove the replication configuration:

```
# /opt/SUNWut/sbin/utreplica -u
```

3. Unconfigure Sun Ray Server Software:

```
# /opt/SUNWut/sbin/utconfig -u
```

4. Answer `y` to all the prompts.
5. Go to “Upgrading the Sun Ray Server” on page 21.

Removing the Software

Note – The following procedures are *not* required for installation or upgrade.

▼ To Remove Sun Ray Server Software

To remove Sun Ray Server Software in its entirety, follow this procedure.

1. **Log in as the superuser of the Sun Ray server.**
You can log in locally or remotely use the `rlogin` or `telnet` commands.

2. Open a shell window and change to the following directory:

```
# cd /opt/SUNWut/sbin
```

3. If you are removing Sun Ray Server Software from a server in a failover group, follow steps a and b. Otherwise, skip to Step 4.

- a. Disable Sun Ray DTU firmware downloads:

```
# ./utfwadm -D -a -n all
```

- b. Remove the replication configuration:

```
# ./utreplica -u
```

4. Remove the Sun Ray network interface(s):

```
# ./utadm -r
```

5. Unconfigure the Sun Ray software:

```
# ./utconfig -u
```

Answer y to all of the prompts.

6. Uninstall Sun Ray Server Software:

```
# cd /  
# /opt/SUNWut/sbin/utinstall -u
```

Answer y to all of the prompts.

7. Repeat the steps in this sub-section for all remaining Sun Ray servers.

Upgrading

This chapter describes the procedure to *upgrade* from earlier versions of Sun Ray Server Software.

Topics in this chapter include:

- “Upgrading the Sun Ray Server” on page 23

Tip – To avoid preserve script errors that can occur if user environment settings are carried forward, use the `su` command with one of the following arguments instead of using the command without arguments.

```
% su -
```

```
% su - root
```

Upgrading the Sun Ray Server

▼ To Upgrade the Sun Ray Server

Tip – If you have already mounted the Sun Ray Server Software 3.1.1 CD-ROM locally or from a remote server, or if you have extracted the ESD files to an image directory, begin at Step 4.

1. As superuser, open a shell window on the Sun Ray server.

2. Use NFS, FTP, or other means to return the
`/var/tmp/SUNWut.upgrade/preserve_version.tar.gz`
file to the Sun Ray server.

3. Insert the Sun Ray Server Software 3.1.1 CD-ROM.

If a file manager window opens, close it. The file manager CD-ROM window is not necessary for upgrade.

4. Change to the image directory. For example:

```
# cd /cdrom/cdrom0
```

5. Upgrade Sun Ray Server Software:

```
# ./utinstall
```

Tip – Reboot the Sun Ray server when the `utinstall` script requests that you do so.

The `utinstall` script:

- Checks to see which required software products are already installed.
- Displays a message about what it has found.
- Might indicate that an encryption change is about to happen. Answer `y` (yes).
- Asks if you want to install localized documentation and Admin GUI.
- Informs you that it will install, upgrade, or migrate the required software products and waits for approval. Answer `y` (yes).
- Removes all previous Sun Ray software.
- Installs the required software applications.
 - Sun Ray Data Store
 - Sun Ray server:
 - Administration software
 - English man pages and product documentation
 - Core software
 - Configuration
 - Drivers
- Provides a notice that the system must be rebooted.

- Ends, indicating a log file is available at
`/var/adm/log/utinstall.year_month_date_hour:minute:second.log`
where the values displayed reflect a time stamp of when `utinstall` was started.

Note – For a listing of `utinstall` error messages, see “`utinstall` Error Messages” on page 48.

6. Run the `utfwadm` command to update the DTU firmware.

- a. For dedicated interconnects, run:**

```
# utfwadm -A -a -n all
```

- b. For LAN subnetworks, run:**

```
# utfwadm -A -a -N all
```

7. Run `utfwsync`:

```
# utfwsync -v
```

This step is required even for standalone servers.

8. See “Configuration” on page 35 for instructions how to configure and reboot the Sun Ray server.

If other systems need a software upgrade, return to “Preserving Configuration Data” on page 18 and repeat the tasks appropriate for each of those systems.

Preparing for Configuration

This chapter describes what to do before you configure the Sun Ray server.

Topics in this chapter include:

- “Configuration Tasks” on page 27
- “Basic Network Topology” on page 32
- “Configuration Worksheets” on page 29

Note – SRSS 3.1.1 does not supply an HTTP server as part of the software; however, if SRSS 3.1.1 finds that an Apache web server is already installed, it configures the Apache server automatically.

Configuration Tasks

To configure a new installation or an upgrade of Sun Ray Server Software:

1. Determine your network topology.

Sun Ray servers can be deployed on dedicated private networks and on shared networks. Sun Ray Server Software deployments on shared networks, whether routed or non-routed shared networks (LANs), offer many benefits to users, especially hotdesking. Shared networks can be configured with or without:

- separate DHCP servers
- bootp forwarding

If you are not sure about any aspect of your network configuration, you may want to consult your IT staff. For more information, see “Deployment on Shared Networks” on page 107 of the *Sun Ray Server Software 3.1.1 Administrator’s Guide*.

2. Fill in the “Configuration Worksheets” on page 29.

3. Configure a Sun Ray interconnect interface if you do not require Sun Ray functionality on a LAN. See “To Configure a Dedicated Sun Ray Interconnect Interface” on page 35. To implement a LAN configuration, see “To Configure the Sun Ray Server on a LAN” on page 38.
4. Configure Sun Ray Server Software. See “To Configure Sun Ray Server Software” on page 40.
5. For failover groups, configure the hierarchy of the Sun Ray servers in the failover group. See “To Configure the Sun Ray Server Hierarchy” on page 41.
6. Synchronize the Sun Ray DTU firmware. See “To Synchronize the Sun Ray DTU Firmware” on page 43
7. After Configuration, reboot the Sun Ray server. See “To Reboot the Sun Ray Server” on page 45.

Repeat this sequence for each Sun Ray server in a failover group.

Note – When the hostname or IP address of a Sun Ray server is changed, the interfaces should also be configured, especially if the Sun Ray server is used for DHCP services.

Configuration Worksheets

Fill out these worksheets so that the information is readily available during the actual configuration process. Values that are provided in *italics* are only *examples* and should *not* be used. Values provided in this font are defaults and can be used. Superscripted numbers ⁽⁷⁾ refer to footnotes at the end of this worksheet.

TABLE 6-1 Basic Parameter Worksheet for Dedicated Interconnect Configuration

Aspect or Variable	Default Value, Example, or (Other)	Your Primary Server Value	Your Secondary Server Value
Configuring the Sun Ray interconnect interface using <code>utadm</code>	(Enter start time here)		
Interface name	<i>eth1</i>		
Host address*	192.168.128.1		
Net mask	255.255.255.0		
Net address	192.168.128.0		
Host name ¹	<i>hostname-interface-name</i>		
If Sun Ray server is used for IP address allocation			
First Sun Ray DTU address	192.168.128.16		
Number of Sun Ray DTU addresses [†]	X		
Firmware server [‡]	192.168.128.1		
Router ⁽³⁾	192.168.128.1		
Specify additional server list? (optional)	(yes or no)		
If yes, File name	<i>filename</i>		
Or, Server IP address	192.168.128.2		
Configuring Sun Ray Server Software using <code>utconfig</code>	(Enter start time here)		
Admin password	<i>adminpass</i>		
Configure Admin GUI? If yes, then:			
Sun Ray admin server port number	1660		
CGI username	utwww		

TABLE 6-1 Basic Parameter Worksheet for Dedicated Interconnect Configuration

Aspect or Variable	Default Value, Example, or (Other)	Your Primary Server Value	Your Secondary Server Value
Enable remote administration? (optional)	(yes or no)		
Configure failover group? (optional)	(yes or no)		
If yes, Failover group signature§	signature1		

* These values are different for each Sun Ray server, even if that server is part of a failover group.

† These values must be unique among the servers in a failover group. The following guidelines help you determine what addresses to allocate for each Sun Ray server:

- * $X = (\text{Number of DTUs} / (\text{Number of servers} - 1)) - 1$
- * First unit address for primary server= 192.168.128.16
- * Last unit address for all servers = $X + \text{first unit address}$. If last unit address is greater than 240, reduce to 240.
- * First unit address for secondary servers = 1 + last unit address of previous server. If first unit address is greater than 239, configure for a class B network.

Example: 120 DTUs, 4 servers. $X = 39$

‡ These values are the same as the interface host address by default.

§ This signature *must* be the same for every Sun Ray server in a failover group. The signature requires at least one numeric character.

If you are configuring a Sun Ray server on a LAN, use the following worksheet:

TABLE 6-2 Local Interface Parameter Worksheet for LAN Configuration

Aspect or Variable	Default Value, Example, or (Other)	Your Primary Server Value	Your Secondary Server Value
Configuring the Sun Ray interconnect interface using utadm	(Enter start time here)		
Subnetwork	192.168.128.0		
Host address ⁽¹⁾	192.168.128.1		
Net mask	255.255.255.0		
Net address	192.168.128.0		
Host name ⁽¹⁾	hostname-interface-name		
If Sun Ray server is used for IP address allocation			
First Sun Ray DTU address ⁽²⁾	192.168.128.16		
Number of Sun Ray DTU addresses ⁽²⁾	X		
Firmware server ⁽³⁾	192.168.128.1		
Router ⁽³⁾	192.168.128.1		
Specify additional server list? (optional)	(yes or no)		
If yes, File name	filename		
Or, Server IP address	192.168.128.2		

(1) These values are different for each Sun Ray server, even if that server is part of a failover group.

(2) These values must be unique among the servers in a failover group. The following guidelines help you determine what addresses to allocate for each Sun Ray server:

* $X = (\text{Number of DTUs} / (\text{Number of servers} - 1)) - 1$

* First unit address for primary server = 192.168.128.16

* Last unit address for all servers = X + first unit address. If last unit address is greater than 240, reduce to 240.

* First unit address for secondary servers = 1 + last unit address of previous server. If first unit address is greater than 239, configure for a class B network.

Example: 120 DTUs, 4 servers. X = 39

(3) These values are the same as the interface host address by default.

If you are configuring for a failover group, fill in this portion of the worksheet:

TABLE 6-3 Sun Ray Server Configuration Failover Parameters

Aspect or Variable	Default Value, Example, or (Other)	Your Primary Server Value	Your Secondary Server Value
Configuring the Sun Ray server hierarchy using <code>utreplica</code> (Required for failover groups)	(Enter start time here)		
Primary Sun Ray server host name ⁽¹⁾	<i>primary-server</i>		
Secondary Sun Ray server host name ⁽¹⁾	<i>secondary-server</i>		

(1) These values are different for each Sun Ray server, even if that server is part of a failover group.

TABLE 6-4 First and Last Unit Address in a Failover Group

Server	First Unit Address	Last Unit Address
Primary	192.168.128.16	192.168.128.55
Secondary	192.168.128.56	192.168.128.95
Secondary	192.168.128.96	192.168.128.135
Secondary	192.168.128.136	192.168.128.175

Tip – If you forget the address range, use `utadm -l` to list the addresses you specified or `utadm -p` to print them.



Basic Network Topology

Before configuring a Sun Ray server on a shared network, you should understand what your basic network configuration looks like. The following figures illustrate, in a simplified form, the most common types.

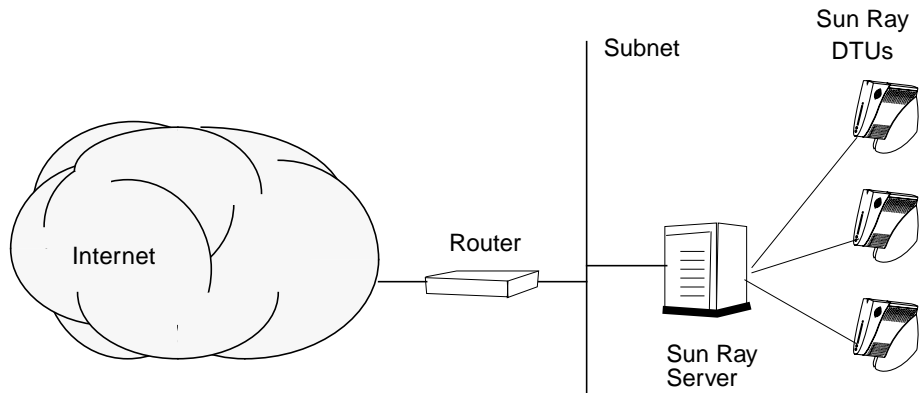


FIGURE 6-1 Dedicated Private Non-routed Sun Ray Network

In contrast to private network configurations, shared network configurations with existing DHCP servers may require bootp forwarding in order to function properly with existing network infrastructure.

Many newer configurations will resemble the following figure, which illustrates a shared network with non-routed Sun Ray DTUs.

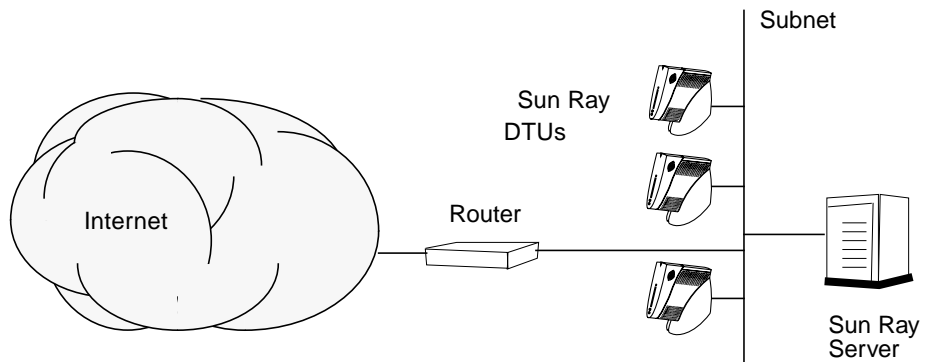


FIGURE 6-2 Shared Network with Non-routed Sun Ray DTUs

Some new configurations use shared, routed networks, as illustrated, in simplified form, in the following figure.

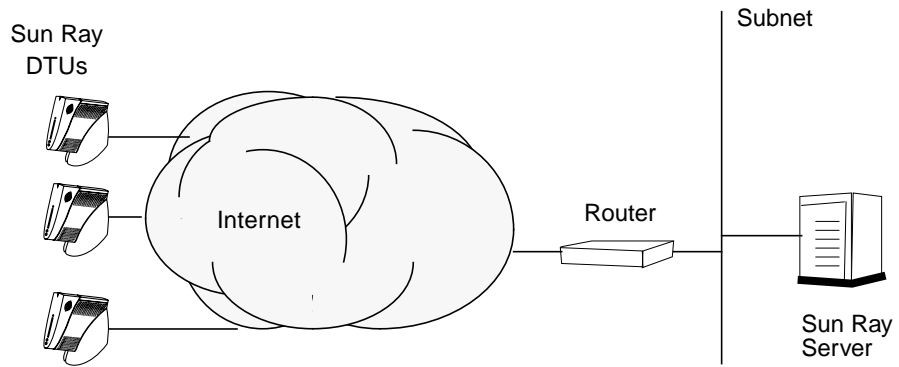


FIGURE 6-3 Shared Routed Network

Note – If you have any doubt as to which network model most nearly approximates your site, please consult your IT staff.

Configuration

This chapter describes how to configure the Sun Ray server. Procedures in this chapter include:

- “To Configure a Dedicated Sun Ray Interconnect Interface” on page 35
- “To Configure the Sun Ray Server on a LAN” on page 38
- “To Turn the Sun Ray LAN Connection On or Off” on page 39
- “To Configure Sun Ray Server Software” on page 40
- “To Configure the Sun Ray Server Hierarchy” on page 41
- “To Synchronize Primary and Secondary Sun Ray Servers” on page 43
- “To Synchronize the Sun Ray DTU Firmware” on page 43
- “To Configure an HTTP Server Manually” on page 43
- “To Reboot the Sun Ray Server” on page 45

For further explanation of Sun Ray network configuration, see Chapter 8 of the *Sun Ray Server Software 3.1.1 Administrator’s Guide*.

Configuring the Sun Ray Server

▼ To Configure a Dedicated Sun Ray Interconnect Interface

1. Log in as the superuser of the Sun Ray server, either locally or remotely.
2. Open a shell window and change to the following directory:

```
# cd /opt/SUNWut/sbin
```

Note – Make sure that the `/etc/hosts` file contains the following entry:
`ip-address of the system hostname`

3. Configure the Sun Ray interconnect interface:

```
# ./utadm -a interface-name
```

where *interface-name* is the name of the interface to the Sun Ray interconnect, for example: *eth1*.

The `utadm` script begins configuring DHCP for the Sun Ray interconnect, restarts the DHCP daemon, and configures the interface. The script then lists the default values and asks if they are acceptable.

Caution – If the IP addresses and DHCP configuration data are not set up correctly when the interfaces are configured, the failover feature cannot work properly. In particular, configuring the Sun Ray server's interconnect IP address as a duplicate of any other server's interconnect IP address may cause the Sun Ray Authentication Manager to generate "Out of Memory" errors.

4. If you are satisfied with the default values, and the server is not part of a failover group, answer *y*.
5. Otherwise, answer *n* and accept whatever default values are shown by pressing return or provide the correct values from the worksheet.

The `utadm` script prompts for the following:

- New host address (192.168.128.1)
- New netmask (255.255.255.0)
- New host name (*hostname-interface-name*)
- Offer IP addresses for this interface? ([Y]/N)
- New first Sun Ray DTU address (192.168.128.16)
- Total number of Sun Ray DTU address (X)
- New authorization server address (192.168.128.1)
- New firmware server address (192.168.128.1)
- New router address (192.168.128.1)
- To specify an additional server list.
If you answer yes, it requests either a filename (*filename*) or a
Server IP Address (192.168.128.2)

6. The `utadm` script again lists the configuration values and asks if they are acceptable. Answer appropriately.

- If you answer `n`, go back to Step 5.
- If you answer `y`, the following Sun Ray-specific files are configured:

```
/etc/opt/SUNWut/net/dhcp/SunRay-options  
/etc/opt/SUNWut/net/dhcp/SunRay-interface-eth1  
/etc/opt/SUNWut/net/hostname.eth1  
/etc/hosts  
/etc/opt/SUNWut/net/netmasks  
/etc/opt/SUNWut/net/networks  
/etc/dhcpd.conf
```

The `utadm` script configures the Sun Ray DTU firmware versions and restarts the DHCP daemon.

7. Repeat Step 1 through Step 6 for each of the secondary servers in your failover group.
8. Go to “Configuring the Sun Ray Server” on page 35.

▼ To Configure the Sun Ray Server on a LAN

1. Log in as the superuser of the Sun Ray server.

You can log in locally or remotely use the `rlogin` or `telnet` commands.

2. Open a shell window and change to the following directory:

```
# cd /opt/SUNWut/sbin
```

3. Configure the Sun Ray LAN subnet:

```
# ./utadm -A subnet#
```

Where *subnet#* is the name (really a number) of the subnet, such as 192.168.128.0.

The `utadm` script begins configuring DHCP for the Sun Ray interconnect, restarts the DHCP daemon, and configures the interface. The script then lists the default values and asks if they are acceptable.

Caution – If the IP addresses and DHCP configuration data are not set up correctly when the interfaces are configured, the failover feature cannot work properly. In particular, configuring the Sun Ray server’s subnet IP address as a duplicate of any other server’s subnet IP address may cause the Sun Ray Authentication Manager to throw “Out of Memory” errors.

4. If you are satisfied with the default values, and the server is not part of a failover group, answer *y*.

5. Otherwise, answer *n* and accept whatever default values are shown by pressing return or provide the correct values from the worksheet.

The `utadm` script prompts for the following:

- New netmask (255.255.255.0)
- New first Sun Ray DTU address (192.168.128.16)
- Total number of Sun Ray DTU addresses
- New authorization server address (192.168.128.1)
- New firmware server address (192.168.128.10)
- New router address (192.168.128.1)
- To specify an additional server list. If you answer yes, it requests either:
 - Filename (*filename*)
 - Server IP Address (192.168.128.2)

6. The `utadm` script again lists the configuration values and asks if they are acceptable. Answer appropriately.
 - If you answer `n`, go back to Step 5.
 - If you answer `y`, the `utadm` script configures the Sun Ray DTU firmware versions and restarts the DHCP daemon.
7. Repeat Step 1 through Step 6 for each of the secondary servers in your failover group. See “To Configure Sun Ray Server Software” on page 40.
8. Proceed to “To Configure Sun Ray Server Software” on page 40.

▼ To Turn the Sun Ray LAN Connection On or Off

When you configure a Sun Ray server for a shared network, the `utadm -A` command enables the server’s LAN connection. If you do not use `utadm -A`, however, and you still wish to enable or disable the LAN connection, use this procedure.

When the LAN connection is turned off, Sun Ray DTUs on the LAN cannot attach to the server.

Tip – If you plan to use an existing DHCP server to provide Sun Ray parameters, use this procedure to turn the LAN connection on or off on the Sun Ray server.

1. Log in as the superuser of the Sun Ray server, either locally or remotely.
2. Turn the Sun Ray LAN connection on:

```
# /opt/SUNWut/sbin/utadm -L on
```

Tip – Use `utadm -l` to verify the current setting for Sun Ray LAN connection. To disable all Sun Ray LAN connections, use `utadm -L off`.

3. Restart services as prompted:

```
# utrestart
```

▼ To Configure Sun Ray Server Software

1. If you have not already done so, log in as the superuser of the Sun Ray server.

You can log in locally or remotely use the `rlogin` or `telnet` commands.

2. Open a shell window and change to the following directory:

```
# cd /opt/SUNWut/sbin
```

3. Configure Sun Ray Server Software

```
# ./utconfig
```

4. Accept the default `utconfig` values shown by pressing Return or provide the correct values from the worksheet.

The `utconfig` script prompts for the following:

- Whether the script should continue (press Return)
- Sun Ray administration password (*adminpass*)
- Sun Ray administration password again

Note – All servers in a failover group must use the same administration password.

- To configure the Sun Ray Admin GUI, (press Return)
- Web server port number (1660)
- CGI username (`utwww`)
- Whether you want to use the existing Apache Web Server to host Sun Ray Web Administration. (You may *not* want to use the existing Apache Web Server if it is already configured for another purpose.)

Note – In order for the Apache Web Server to function properly with RHEL AS 4 Update 3, security protection for the `httpd` daemon must be removed. For details, please see the following URL:

<http://www.redhat.com/security/innovative/selinux/>

- Whether you want to enable remote administration.
- Whether you want to configure for a failover group
- Whether the script should continue (press Return)

The `utconfig` script begins configuring Sun Ray Server Software.

- If you responded that this is a failover group, the script requests the signature (*signature1*)

- The signature again

The Sun Ray Data Store is restarted.

Note – The `utconfig` script states that you must restart the authentication manager. This happens automatically when you reboot the Sun Ray server.

The `utconfig` script ends, indicating a log file is available at the following locations:

```
/var/log/SUNWut/utconfig.year_month_date_hour:minute:second.log
```

Where the *year*, *month*, etc are represented by numeric values reflecting the time `utconfig` was started.

5. Repeat Step 1 through Step 4 for each secondary server if in a failover group.
6. Do one of the following:
 - If you have a failover group, see “To Configure the Sun Ray Server Hierarchy” on page 41.
 - Otherwise, go to “To Synchronize the Sun Ray DTU Firmware” on page 43.

▼ To Configure the Sun Ray Server Hierarchy

Perform this task after all servers in the failover group have been configured.

Note – If a common home directory is mounted on machines with different Gnome versions, conflicts between or among the versions cause unpredictable behavior. Do not try to use multiple Gnome versions with a common home directory.

1. If you have not already done so, log in as the superuser of the primary Sun Ray server.

You can log in locally or remotely use the `rlogin` or `telnet` commands.
2. Open a shell window and change to the following directory:

```
# cd /opt/SUNWut/sbin
```

3. Configure this server as the primary Sun Ray server and identify all secondary servers.

```
# ./utreplica -p secondary-server1 secondary-server2 ...
```

Where *secondary-server1*, *secondary-server2*, ... identifies the host names of the secondary servers. Include all secondary servers in this command.

The utreplica script:

- Stops and starts the Sun Ray services
- Reads the Authentication Manager policy
- Indicates a log file is available at the appropriate location:
 - /var/log/SUNWut/utreplica.year_month_date_hour:minute:second.log

4. Log in as the superuser of a secondary Sun Ray server.

You can log in locally or remotely using the `rlogin` or `telnet` commands.

5. Open a shell window and change to the following directory:

```
# cd /opt/SUNWut/sbin
```

6. Configure the server as a secondary Sun Ray server and identify the primary server.

```
# ./utreplica -s primary-server
```

Where *primary-server* is the host name of the primary server configured in Step 3.

7. Repeat Step 4 through Step 6 for all remaining secondary servers.

8. When you are finished, go to “To Synchronize the Sun Ray DTU Firmware” on page 43.

▼ To Synchronize Primary and Secondary Sun Ray Servers

Log files for Sun Ray servers contain time-stamped error messages which are difficult to interpret if the time is out of sync. To make troubleshooting easier, please make sure that all secondary servers periodically synchronize with their primary server. For instance:

```
# rdate <primary-server>
```

▼ To Synchronize the Sun Ray DTU Firmware

Note – This task is performed on standalone Sun Ray servers or the last Sun Ray server configured in a failover group. If your server is not one of these, see “To Reboot the Sun Ray Server” on page 45.

1. If you have not already done so, log in as the superuser of the Sun Ray server.
You can log in locally or remotely using the `rlogin` or `telnet` commands.
2. Open a shell window and change to the following directory:

```
# cd /opt/SUNWut/sbin
```

3. Synchronize the Sun Ray DTU firmware:

```
# ./utfwsync
```

The Sun Ray DTUs will reboot themselves and load the new firmware.

4. When you are finished, go to “To Reboot the Sun Ray Server” on page 45 for instructions how to reboot the server.

▼ To Configure an HTTP Server Manually

To successfully configure an HTTP server to host the Sun Ray Administration Tool (Admin GUI), you must choose to configure the web server manually in `utconfig`. The `utconfig` script creates the directories, symbolic links, and user/group identities required to operate the Admin GUI.

Any web server can be manually configured to host the Admin GUI as long as:

- The web server supports the CGI version 1.1 specification.
- The web server supports directory and script aliasing.
- The web server allows you to set the user and group ID.

The best way to manually configure a web server is to look at `/etc/opt/SUNWut/http/http.conf` after running `utconfig`. This file contains all the specific parameters and values you will need to manipulate in order to properly configure the web server.

For manual configuration, the key components needed to make a web server work with the Sun Ray Admin GUI are:

Component	Description	Comments
port number	Port number that the web server should listen on	The administrator can decide which port number to use. The default is 1660.
document root	The root to the document tree structure (HTML, images, JavaScript, etc.)	The document root must be set to: <code>/var/opt/SUNWut/http/docroot - document root</code>
server name	The name of the server the web server is running on	The name of the server where SRSS and the web server are running.
cgi-bin	The directory where files are to be executed as cgi scripts	The cgi-bin directory is: <code>/var/opt/SUNWut/http/docroot/cgi-bin</code>
user id	The user id that the web server should be run as	The user to run the web server as. The default value is <code>utwww</code> .

Component	Description	Comments
port number	Port number that the web server should listen on	The administrator can decide which port number to use. The default is 1660.
group	The user group the web server should be run as	The group to run the web server as. Only utadmin is used at this time.
aliases id	Any other directory aliases used by the HTML or CGI to point to specific directories	Some HTML and CGI files use aliases to access directories in the document tree. These aliases need to be created in order for everything to function properly: /docroot /var/opt/SUNWut/http/docroot/ /images/ /var/opt/SUNWut/http/docroot/public/images/ /javascript/ /var/opt/SUNWut/http/docroot/public/javascript/
homepage	The page where the server should start	Set to /var/opt/SUNWut/http/docroot/cgi-bin/start

▼ To Reboot the Sun Ray Server

After following the configuration procedures, reboot the Sun Ray server(s).

1. If you have not already done so, log in as the superuser of the Sun Ray server.

You can log in locally or remotely use the `rlogin` or `telnet` commands.

2. Open a shell window and reboot the Sun Ray server:

```
# sync;sync;init 6
```

The Sun Ray server is rebooted.

3. Repeat Step 1 and Step 2 for each Sun Ray server.

See Appendix A for more information and procedures.

Additional Information

This appendix provides additional information regarding your installation or upgrade to Sun Ray Server Software 3.1.1.

Topics covered in this appendix include:

- “Modified System Files” on page 47
- “utinstall Error Messages” on page 48

Modified System Files

The following files are modified during `utadm`:

- `/etc/dhcpd.conf`
- `/etc/nsswitch.conf`
- `/etc/opt/SUNWut/net/dhcp/SunRay-options`
- `/etc/opt/SUNWut/net/dhcp/SunRay-interface-eth1`
- `/etc/opt/SUNWut/net/hostname.eth1`
- `/etc/opt/SUNWut/net/networks`
- `/etc/opt/SUNWut/net/netmasks`
- `/etc/hosts`

The following files are modified during `utconfig`:

- `/etc/passwd`
- `/etc/shadow`
- `/etc/group`

utinstall Error Messages

If during an installation, upgrade, or uninstall the `utinstall` script returns an error, refer to the following table for assistance.

TABLE A-1 utinstall Error Messages

Message	Meaning	Resolution
<code>utinstall: fatal, media-dir is not a valid directory.</code>	You called the <code>-d</code> option, but <i>media-dir</i> is incomplete.	The <i>media-dir</i> directory requires relevant patches and packages for installation. The <i>media-dir</i> directory includes the Sun Ray directory.
<code>xxxxxx not successfully installed</code>	Might occur for the installation of any application or patch, <i>xxxxxx</i> , if relevant packages have not been properly installed.	Verify the component <i>xxxxxx</i> is present in the installation media directory path and has the correct permissions, then re-run the <code>utinstall</code> script.
<code>The following packages were not successfully removed xxxxxx ...</code>	The packages listed have not been properly removed.	Use the <code>rpm</code> command to remove each <code>rpm</code> listed manually, then run <code>utinstall -u</code> again.
<code>A different version x.x of product has been detected. The other-product Software is only compatible with product y.y. You must either upgrade or remove the current product installation before proceeding.</code>	Some of the applications provided with Sun Ray Server Software are only compatible with certain versions of other applications.	Compatible and necessary applications are included with Sun Ray Server Software. Remove older versions, then re-run the <code>utinstall</code> script.
<code>Exiting ...</code>		
<code>error, no Sun Ray software packages installed.</code>	None of the Sun Ray components are installed on this system.	No action is required as the product is not installed.
<code>The following files were not successfully replaced during this upgrade. The saved copies can be found in <directory></code>	Some files were not properly replaced as part of the upgrade.	Manually copy the listed files from the <i>directory</i> overwriting the newer files if applicable.
<code>Removal of product was not successfully completed. See log file for more details.</code>	Removal of Sun Ray Server Software was incomplete.	Check <i>logfile</i> for the package that started the problem and manually remove it with <code>therpm -e</code> command, then run <code>utinstall -u</code> again.
Partition Name Space Required Space Available ----- <i>partition</i> <i>xxx</i> <i>yyy</i>		Not enough disk space was allocated for <i>partition</i> . Repartition the disk and run <code>utinstall</code> again.

Index

B

bootp forwarding, 27, 33

C

conditions

 Web browser, 9

configuration data

 DHCP, 36, 38

configuration worksheet, 29, 31

D

Data Store, 6, 16, 18

 Sun DS vs Sun Ray DS, 17

data store

 daemon, 19

DHCP, 36, 38

DHCP configuration data, 36, 38

DHCP servers

 third-party, 27

duplicate IP addresses, 36, 38

E

errors

 out of memory, 36, 38

F

failover groups

 unit addresses, 32

 upgrade considerations, 16

failover parameters, 32

H

hardware requirements, 6

hierarchy

 Sun Ray server

 to configure, 41

I

interconnect interface

 to configure, 35

interconnect IP address, 36

IP address

 duplicate, 36, 38

L

LAN connection

 to enable or disable, 39

LDAP, 8

M

messages

 utinstall

 error, 48

 utinstall error, 48

O

out of memory error, 36, 38

P

port requirements, 8

R

rdate, 43

requirements

- data store, 8

- disk space, 6

- port, 8

- software, 7

- Sun Ray Data Store, 8

- upgrade, 15

S

Sun Ray

- appliance firmware

 - to synchronize, 43

Sun Ray Data Store, 8, 17

Sun Ray Server

- hierarchy

 - to configure, 41

Sun Ray Server configuration

- failover parameters, 32

Sun Ray server software

- to remove, 20

U

utadm, 17

- configuration values, 37, 39

- description, 36, 38

- prompts, 36, 38

utadm -L, 39

utadm -l, 39

utconfig, 17, 20, 40

- prompts, 40

utfwsync, 43

utinstall, 12, 24

- reboot message, 24

- summary, 24

utinstall error messages, 48

utpreserve, 18, 19

- description, 18

- sample feedback, 18, 19

utreplica, 20

- description, 42

W

Web browser conditions, 9