

Office Router

Livingston PortMaster Office Router Easy, Low-Cost Internetworking for Small Offices.



New, compact router platform.

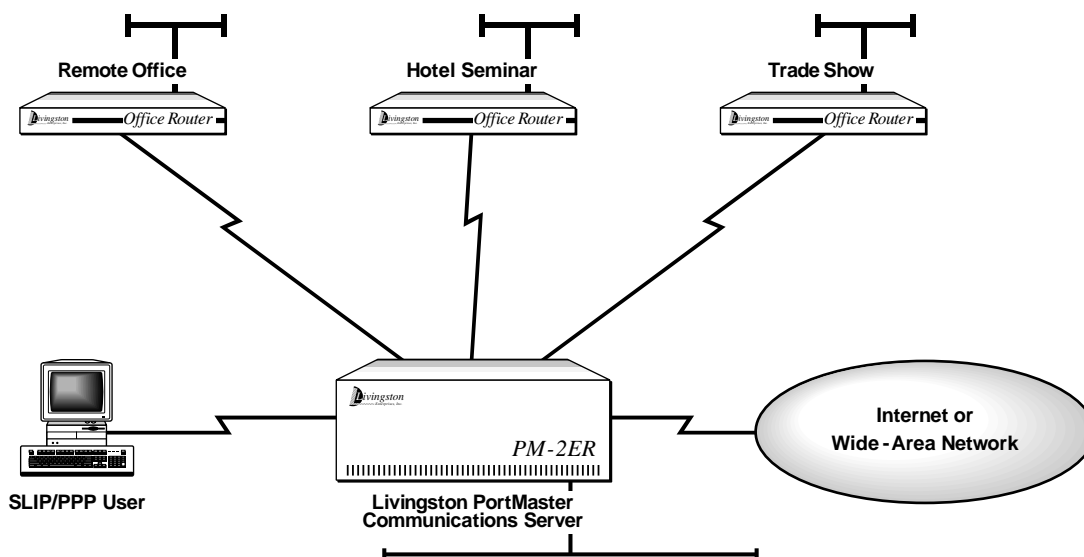
Instant Access Anywhere

Now even small offices and remote networks can become part of the overall enterprise network using standard telephone lines. Rather than each PC having its own dial-up phone line and modem, the PortMaster™ Office Router allows everyone to share phone line bandwidth and costs. And anywhere you can get a telephone line, you can create a temporary remote network — even at a trade show or hotel seminar.

The PortMaster Office Router can be a dial-up multiprotocol router (TCP/IP, Novell IPX), a dial-in/dial-out IP and IPX communications server, or both. It features an integrated PCMCIA slot, so you can take advantage of using cost-effective and easily upgradable V.34 or V.32bis PCMCIA modems without any of the disadvantages of a dial-up router with built-in modems. ISDN is supported using the PortMaster Office Router's external asynchronous port and an ISDN terminal adapter.

The PortMaster Office Router has all the security features found in Livingston PortMaster Communications Servers and is very easy to configure using Livingston PMconsole™ administration software, which is included.

Another
piece of
Livingston's
total
remote
access
solution.



SPECIFICATIONS**GENERAL**

Flash memory
 Local or network booting
 SNMP (MIB 2)
 Reverse Telnet
 Ping utility
 Traceroute utility
 IPX SAP Filtering
 Multi-line load balancing
 Domain name service or network information service
 Single or multiprotocol support selectable on each port
 Novell keep alive spoofing
 PPP auto detect
 Session idle timers

SUPPORTED PROTOCOLS

TCP, IP, IPX, SPX, SAP, RIP, SLIP, CSLIP, ICMP,
 UDP, ARP, Telnet, Rlogin, PPP (fully compliant:
 RFC 1331, RFC 1332, RFC 1334, RFC 1618; backward
 compatible: RFC 1171, RFC 1172.)

ROUTING SUPPORT

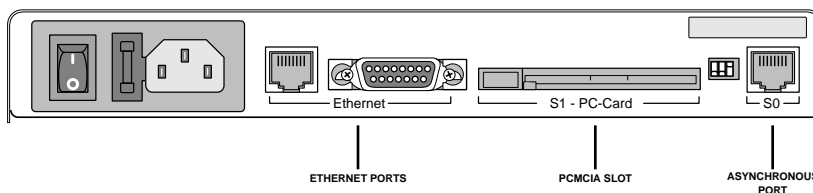
Concurrent TCP/IP and Novell IPX routing
 On-demand dial-up routing
 Unnumbered WAN links for TCP/IP
 Static routes
 On-demand, continuous connection, and manual/scheduled dialing
 Dynamic routing using RIP for IP and IPX
 RIP support on a per-interface basis
 Support for IP host, subnet, and network routes
 Automatic packet queuing and redial
 Proxy ARP

SECURITY

Local username/password database
 Dialback
 PAP and CHAP authentication
 Inbound/outbound IP and IPX packet filters
 Packet logging to centralized host
 Central authentication via RADIUS protocol
 Per user authorization filters (source address, destination address,
 protocol, protocol service (Web, e-mail, ftp), status of connection)
 User accounting (audit trails)

ASYNCHRONOUS/PCMCIA PORT SUPPORT

LAN-to-LAN dial-on-demand routing
 Concurrent TCP/IP and Novell IPX dial-in
 Standard dial-up phone lines (using V.32bis and V.34 modems)
 ISDN (with external terminal adapter)

**LIVINGSTON PORTMASTER OFFICE ROUTER**

with Ethernet port (AUI connector or built-in 10BaseT transceiver),
 PCMCIA serial port, and asynchronous serial port.

HARDWARE

One Ethernet port with two connector choices

AUI connector

Built-in 10BaseT transceiver (RJ-45)

One PCMCIA serial port

Supports Type-2 PCMCIA modem cards

For an updated list of tested modems, please refer to
 Livingston's Web page (www.livingston.com).

One asynchronous serial port

Up to 115.2 Kbps

RS-423/232 interface

RJ-45 connector

DTR, DSR, DCD, RTS, CTS, TXD, RXD

Either or both WAN ports can be used as a primary dial-up
 router port, back-up dial-up router port, dial-in port for
 network management, or one- or two-port communications
 server for remote LAN connectivity (SLIP, PPP, Telnet,
 TCP/IP, IPX).

Dimensions

Length: 8.75 in (22 cm)

Width: 10.5 in (26.2 cm)

Height: 1.75 in (4.3 cm)

Weight: 3.9 lb (1.8 kg)

Power requirements

110 VAC \pm 10%, 47-63 Hz

240 VAC \pm 10%, 47-63 Hz

Environmental operating range

Temperature: 32F to 104F (0C to 40C)

Humidity: 10% to 90%

Agency approvals

FCC, UL, CSA



Livingston Enterprises

6920 Koll Center Parkway, # 220

Pleasanton, California 94566

phone 800.458.9966 or 510.426.0770

fax 510.426.8951

e-mail sales@livingston.com

web <http://www.livingston.com>