

Synchronous Office Routers

Livingston
Enterprises, Inc.

Livingston PortMaster Synchronous Office Routers High-Speed Access for Demanding Internet Applications.

Part of the Livingston Office Router family.

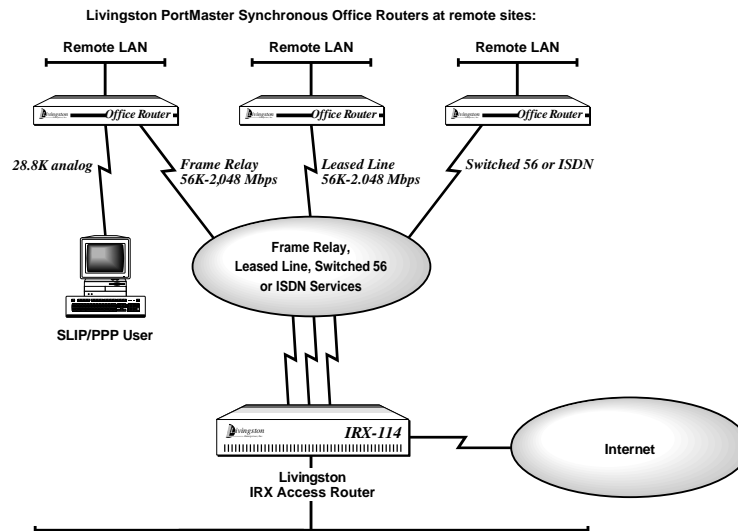


Secure, Reliable and Cost-Effective Internet Access.

Whether you are a growing business, a branch office, or a school, you want Internet access for your local area network. For the highest performance, greatest reliability, and tightest security, you need the PortMaster™ Synchronous Office Router from Livingston, a provider of remote access technology to more than 1500 Internet Service Providers. Livingston PortMaster Synchronous Office Routers give you high-speed and transparent access to all Internet resources, including the web, e-mail, and file transfers. For maximum security, advanced firewall filtering lets you selectively control all incoming traffic to protect your network from intruders. And, for greater productivity, Livingston ChoiceNet™ technology lets you control employee or student access to Internet sites.

Two versions are available — the T1/E1 model for speeds up to 1.544/2.048 Mbps and the 384K model. Both support Frame Relay, leased line and switched 56 wide-area network services. Each version also contains an asynchronous port, enabling dial-in access for remote users (see diagram). Like all PortMaster products, PortMaster Synchronous Office Routers run Livingston's industry-standard ComOS™ operating system software, the world's most efficient and reliable remote access platform. Router set-up, configuration and management are easy and flexible. And Livingston provides free lifetime technical support and software upgrades.

Another
piece of
Livingston's
total
remote
access
solution.



SPECIFICATIONS

GENERAL

Flash memory
Local or network booting
SNMP (MIB 2)
Reverse Telnet
Ping utility
Traceroute utility
IPX SAP Filtering
Domain name service or network information service
Single or multi-protocol support selectable on each port
Novell keep-alive spoofing
PPP auto detect
Session idle timers
BOOTP

SUPPORTED PROTOCOLS

TCP, IP, IPX, SPX, SAP, RIP, SLIP, CSLIP, ICMP,
UDP, ARP, telnet, rlogin, PPP (Fully compliant: RFC 1331;
RFC 1332; RFC 1334; backward compatible: RFC 1171;
RFC 1172; RFC 1877)

ROUTING SUPPORT

Concurrent TCP/IP and Novell IPX routing
On-demand dial-up routing
Unnumbered WAN links for TCP/IP
Static routes
On-demand, continuous connection, and manual/scheduled dialing
Dynamic routing using RIP for IP and IPX
RIP support on a per-interface basis
Support for IP host, subnet, and network routes
Automatic packet queuing and redial
Proxy ARP

SECURITY

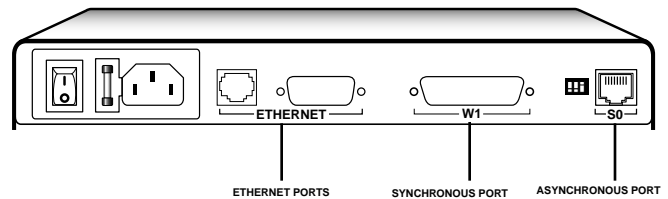
Local username/password database
Dialback
PAP and CHAP authentication
Inbound/outbound IP and IPX packet filters
Central authentication via RADIUS protocol
Authorization filters (source address, destination address, protocol,
protocol service [web, e-mail, ftp], status of connection)
User accounting (audit trails)
ChoiceNet content management tool

ASYNCHRONOUS PORT SUPPORT

Concurrent TCP/IP and Novell IPX dial-in
LAN-to-LAN dial-on-demand routing
Standard dial-up phone lines (using V.32bis and V.34 modems)
Dial back-up of WAN port
ISDN (with external terminal adapter)

SYNCHRONOUS PORT SUPPORT

LAN-to-LAN routing
Frame Relay
Leased-line services (56K, 64K, fractional T1/E1, T1/E1)
Switched 56
ISDN (with external terminal adapter)
V.25bis



LIVINGSTON PORTMASTER SYNCHRONOUS OFFICE ROUTER with Ethernet port (AUI connector or built-in 10BaseT transceiver), synchronous port, and asynchronous serial port.

HARDWARE

One Ethernet port with two connector choices

AUI connector
Built-in 10BaseT transceiver (RJ-45)

One synchronous port

T1/E1 version: up to 2.048 Mbps (E1)
384K version: up to 384 Kbps
DB-25 connector
V.35, X.21, RS-530 electrical interface

One asynchronous serial port

Up to 115.2 Kbps
RS-423/232 interface
RJ-45 connector
DTR, DSR, DCD, RTS, CTS, TXD, RXD signals

Dimensions

Length: 8.75 in (22 cm)
Width: 10.5 in (26.2 cm)
Height: 1.75 in (4.3 cm)
Weight: 3.9 lb (1.8 kg)

Power Requirements

110 VAC $\pm 10\%$, 47-63 Hz
240 VAC $\pm 10\%$, 47-63 Hz

Environmental Operating Range

Temperature: 32F to 104F (0C to 40C)
Humidity: 10% to 90%

Agency Approvals

FCC, UL, CSA, TUV, CE



Livingston Enterprises

6920 Koll Center Parkway, # 220

Pleasanton, California 94566 USA

phone 800.458.9966 or 510.426.0770

fax 510.426.8951

e-mail sales@livingston.com

web <http://www.livingston.com/>