

FFx20 Config Converter App Notes

Product Support Application Notes



What it is

This program is designed to help you retrieve your user base from the FaxFinder x20 product and ready it for direct import into your FaxFinder x40 series product during installation.

Notes:

- The converted files will be created in the same directory as the application program.
- The "Connect To FaxFinder" function only works under Windows XP or earlier.
- Use of this tool under Windows Vista or Windows 7, etc. is supported for conversion of a configuration file only. You must manually extract the configuration file from your FaxFinder X20 product either using the "Multitech Device Manager" software, or use TFTP which will require installation from your Windows operating system source media. See section "TFTP Tool"
- If you have an issue with the functionality of this product, please log into the Web Support Portal at <https://support.multitech.com/support/login.html> and create a case with information about the problem, and attach your cfgtxtfile to the case.

Instructions

If you run this from a Windows XP computer, you do not need any special tools or programs! The tool has the ability to pull your configuration file from your FaxFinder and convert it in one step.

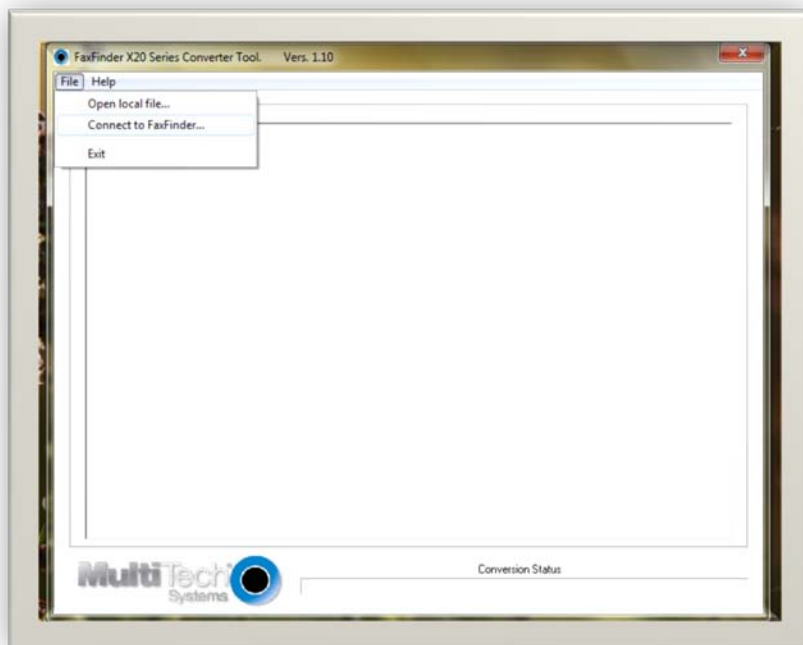
Copy the tool either to your "My Documents" folder, or create a sub folder inside your "My Documents" folder tree.

FFx20 Config Converter App Notes

Product Support Application Notes



Windows XP users:



Launch the tool.

A popup will appear. Read through this and then click Ok when you are finished.

If you are running under Windows XP, click FILE, then select "CONNECT TO FAXFINDER...".

A popup dialog will appear.

Enter the specific IP address of your FaxFinder FFX20 model. The tool will then open a connection to your FaxFinder, retrieve a copy of the configuration file from it, and then process the file.

You will then see the completion window show what it found for your data in your file. At this point you are finished. Click FILE, then EXIT.

Your converted files will be present with the program and are named as follows:

```
ffx40inboundroutes.csv  
ffx40users.csv  
ffx40administrators.txt
```

The text file is for you to obtain the data about the "Administrators" of your legacy product so that you may apply them to the new product. This must be done by you; and by hand.

The ffx40inboundroutes.csv is ready for direct read into your FaxFinder X40 product into the FAX CONFIGURATION|INBOUND ROUTES section.

The ffx40users.csv is ready for direct read into your FaxFinder x40 USERS area.

FFx20 Config Converter App Notes

Product Support Application Notes



Windows Vista/7 or newer.

If you are running the program under something newer such as Vista, Windows 7, etc., then you will need to manually retrieve the configuration file from your FaxFinder product.

You can either use the Device Manager Software that some have already installed for maintaining your FaxFinder x20 product or use TFTP. If TFTP is not installed on your Operating System, you will need the Windows installation media to install it. *(See later in this document how to install TFTP)*

If you now have TFTP installed in your Windows Vista or Windows 7:

Open a command prompt as Administrator.

[Click *Start*, then navigate to *ALL PROGRAMS*, then into *ACCESSORIES*, and then right click on *Command Prompt*, and choose **Run As Administrator**]

In the command line enter the commands below as shown.

(NOTE: pay attention to the letter case of the following command. These are case sensitive)

```
tftp -i 192.168.x.x get cfgtxtfile cfgtxtfile
```

The first cfgtxtfile specifies the one that is located within your legacy FaxFinder x20 product. The second “cfgtxtfile” in the above command is the destination output file where you will save it. If you need to prefix a path to it such as to save it to a specific location, be sure to properly format it as this example.

Eg;

```
tftp -i 192.168.x.x get cfgtxtfile f:\server1\mystuff\cfgtxtfile
```

If you do this, make sure you have write access to that location.

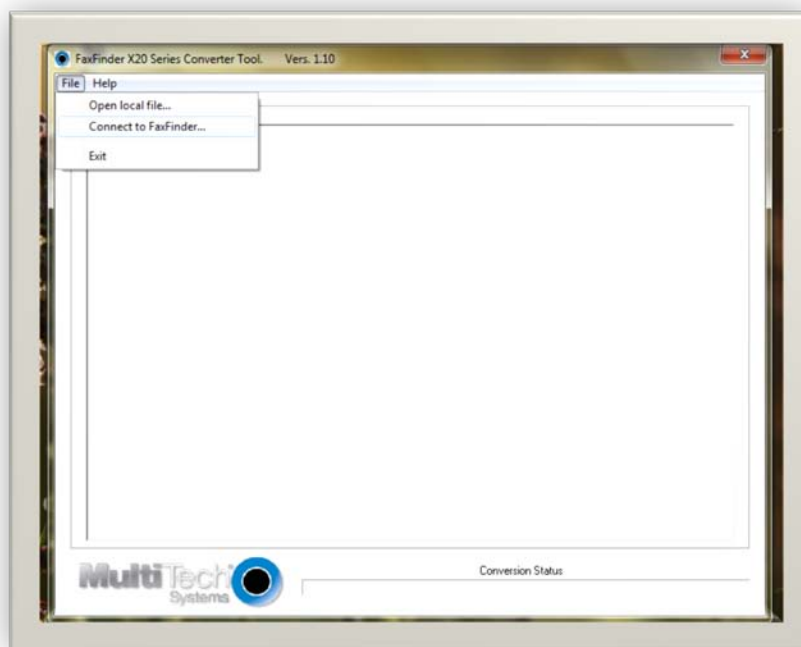
If you launch this from the same folder as the tool; using the example;

```
tftp -i 192.168.x.x get cfgtxtfile cfgtxtfile
```

it should put the output file in the same folder.

FFx20 Config Converter App Notes

Product Support Application Notes



Now; Launch the tool.

A popup will appear. Read through this and then click Ok when you are finished.

Click **FILE**, then select **OPEN LOCAL FILE...**

If you deposited the cfgtxtfile in the same folder as the tool, you will see your file here and can click on it to open it. If you downloaded it to somewhere else, you can browse to where you stored it and open it up from there.

Once opened, the tool will convert the file and finish. You will then see the completion window show your data. At this point you are finished. Click **FILE**, then **EXIT**.

The tool produces 3 special files.

```
ffx40inboundroutes.csv  
ffx40users.csv  
ffx40administrators.txt
```

The text file requires your manual entry of these admin accounts. Simply open and read in any text editor.

The ffx40inboundroutes.csv is ready for direct read into your FaxFinder x40 product into the FAX CONFIGURATION|INBOUND ROUTES section.

The ffx40users.csv is ready for direct read into your FaxFinder x40 USERS area.

FFx20 Config Converter App Notes

Product Support Application Notes



How to Install TFTP in Windows Vista/7

By default, the TFTP client is disabled in both Windows Vista and Windows 7. It is a simple process to enable them. These steps detailed below describe how to do this.

1.) Click the 'Start Menu' and then the 'Control Panel' button.

NOTE: If you cannot locate the 'Control Panel' button follow these instructions, **otherwise skip to step 2.):**

Right click on the 'Start Menu' button

Left click the 'Properties' option

Left click the 'Customize...' button at the top right corner of the window that appears

Locate the 'Control Panel' option (options are in alphabetical order)

Beneath the 'Control Panel' option, there are three radio buttons

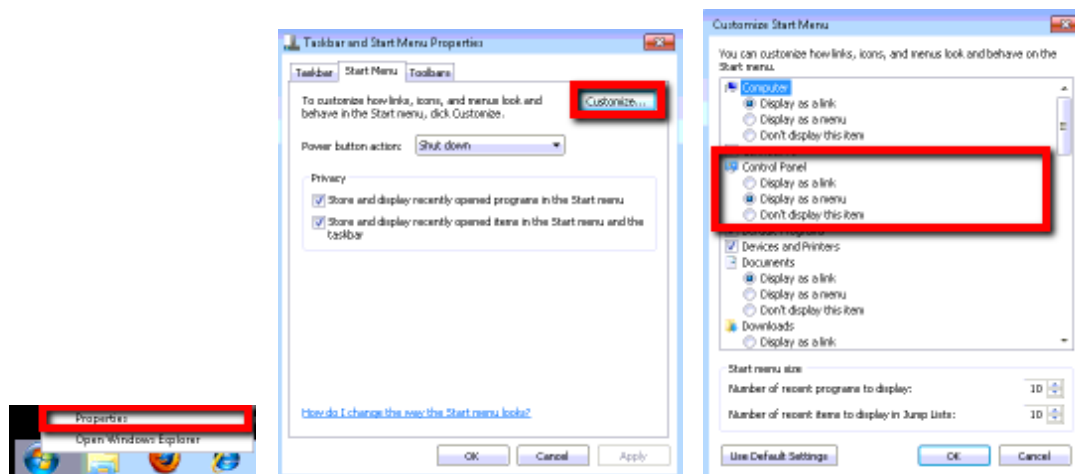
'Display as a link' (When this option is selected, the 'Control Panel' button will open a new window when clicked)

'Display as a menu' (When this option is selected, hovering the cursor over the option causes a sub-menu to open)

'Don't display this item' (The 'Control Panel' option is not available in the 'Start Menu')

Choose the desired radio button and click 'OK'

Click 'OK' on the 'Taskbar and Start Menu Properties' window

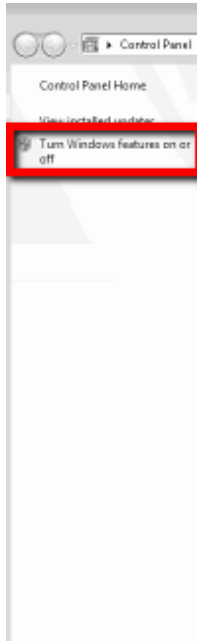


2.) Double click on the 'Programs and Features' option

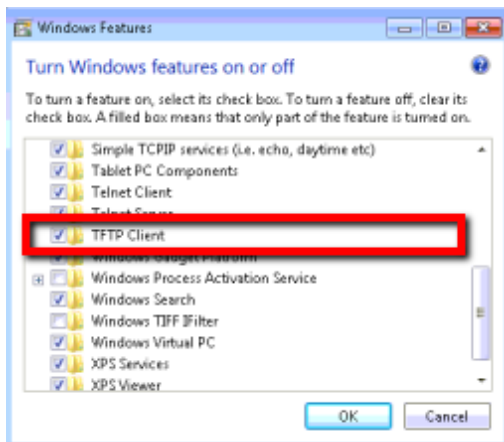
3.) Click on the 'Turn Windows Features On or Off' option

FFx20 Config Converter App Notes

Product Support Application Notes



4.) A new window will appear. Place a check mark in the 'TFTP Client' option and click 'OK'



5.) A window will appear with a status bar. Once this window disappears, the TFTP client has been installed and activated. It can take as much as 2-3 minutes for this to finish. Be patient!

FFx20 Config Converter App Notes

Product Support Application Notes



Summary

Remember that if you need to, you can modify any of the data in these CSV files by using a spreadsheet program such as Excel. Be sure that when saving them back out, they retain their original structure which is simple ASCII comma delimited files. The FaxFinder cannot read Microsoft formatted CSV files in native format. In some versions of Excel, you must export using MSDOS format CSV. See your version of Office help on how to do this.

You can prove it as a good file save by simply being able to read these when opened up in "Notepad".

Bugs and Enhancements Addressed

None at this time. Initial release.