

# Telit USB Driver Installer - User Guide

1VV0301164 Rev.1 - 2015-01-16



## APPLICABILITY TABLE

PRODUCT
ATOP 3.5G
CC864 Series
CE910 Series
DE910 Series
GE910 Series
HE863 Series
HE910 Series
HE910 V2 Series
HE920 Series
LE910 Series
LE920 Series
UC864 Series
UE910 Series
UE910 V2 Series
UL865 Series

### SW Version

1.01.0009  
UF.00.01



*SPECIFICATIONS SUBJECT TO CHANGE WITHOUT NOTICE***Notice**

While reasonable efforts have been made to assure the accuracy of this document, Telit assumes no liability resulting from any inaccuracies or omissions in this document, or from use of the information obtained herein. The information in this document has been carefully checked and is believed to be entirely reliable. However, no responsibility is assumed for inaccuracies or omissions. Telit reserves the right to make changes to any products described herein and reserves the right to revise this document and to make changes from time to time in content hereof with no obligation to notify any person of revisions or changes. Telit does not assume any liability arising out of the application or use of any product, software, or circuit described herein; neither does it convey license under its patent rights or the rights of others.

It is possible that this publication may contain references to, or information about Telit products (machines and programs), programming, or services that are not announced in your country. Such references or information must not be construed to mean that Telit intends to announce such Telit products, programming, or services in your country.

**Copyrights**

This instruction manual and the Telit products described in this instruction manual may be, include or describe copyrighted Telit material, such as computer programs stored in semiconductor memories or other media. Laws in the Italy and other countries preserve for Telit and its licensors certain exclusive rights for copyrighted material, including the exclusive right to copy, reproduce in any form, distribute and make derivative works of the copyrighted material. Accordingly, any copyrighted material of Telit and its licensors contained herein or in the Telit products described in this instruction manual may not be copied, reproduced, distributed, merged or modified in any manner without the express written permission of Telit. Furthermore, the purchase of Telit products shall not be deemed to grant either directly or by implication, estoppel, or otherwise, any license under the copyrights, patents or patent applications of Telit, as arises by operation of law in the sale of a product.

**Computer Software Copyrights**

The Telit and 3rd Party supplied Software (SW) products described in this instruction manual may include copyrighted Telit and other 3rd Party supplied computer programs stored in semiconductor memories or other media. Laws in the Italy and other countries preserve for Telit and other 3rd Party supplied SW certain exclusive rights for copyrighted computer programs, including the exclusive right to copy or reproduce in any form the copyrighted computer program. Accordingly, any copyrighted Telit or other 3rd Party supplied SW computer programs contained in the Telit products described in this instruction manual may not be copied (reverse engineered) or reproduced in any manner without the express written permission of Telit or the 3rd Party SW supplier. Furthermore, the purchase of Telit products shall not be deemed to grant either directly or by implication, estoppel, or otherwise, any license under the copyrights, patents or patent applications of Telit or other 3rd Party supplied SW, except for the normal non-exclusive, royalty free license to use that arises by operation of law in the sale of a product.



## Usage and Disclosure Restrictions

### License Agreements

The software described in this document is the property of Telit and its licensors. It is furnished by express license agreement only and may be used only in accordance with the terms of such an agreement.

### Copyrighted Materials

Software and documentation are copyrighted materials. Making unauthorized copies is prohibited by law. No part of the software or documentation may be reproduced, transmitted, transcribed, stored in a retrieval system, or translated into any language or computer language, in any form or by any means, without prior written permission of Telit

### High Risk Materials

Components, units, or third-party products used in the product described herein are NOT fault-tolerant and are NOT designed, manufactured, or intended for use as on-line control equipment in the following hazardous environments requiring fail-safe controls: the operation of Nuclear Facilities, Aircraft Navigation or Aircraft Communication Systems, Air Traffic Control, Life Support, or Weapons Systems (High Risk Activities"). Telit and its supplier(s) specifically disclaim any expressed or implied warranty of fitness for such High Risk Activities.

### Trademarks

TELIT and the Stylized T Logo are registered in Trademark Office. All other product or service names are the property of their respective owners.

Copyright © Telit Communications S.p.A. 2015.



## Contents

<b>1. Introduction .....</b>	<b>6</b>
1.1. Scope .....	6
1.2. Audience .....	6
1.3. Contact Information, Support .....	6
1.4. Document Organization .....	7
1.5. Text Conventions .....	7
<b>2. Telit Usb Driver Installer .....</b>	<b>8</b>
2.1. Scope of the installer .....	8
2.2. How to use the installer .....	9
2.3. Enable/disable selective suspend .....	11
2.3.1. Telit IMC based modems .....	11
2.3.2. Telit QC based modems .....	11
<b>3. Document History .....</b>	<b>13</b>



## 1. Introduction

### 1.1. Scope

Scope of this document is to give an overview of the usb driver installer for Telit modules on Windows Desktop system.

### 1.2. Audience

This document is intended for users who are about to install one of Telit modules on their Windows Desktop system.

### 1.3. Contact Information, Support

For general contact, technical support, to report documentation errors and to order manuals, contact Telit Technical Support Center (TTSC) at:

[TS-EMEA@telit.com](mailto:TS-EMEA@telit.com)  
[TS-NORTHAMERICA@telit.com](mailto:TS-NORTHAMERICA@telit.com)  
[TS-LATINAMERICA@telit.com](mailto:TS-LATINAMERICA@telit.com)  
[TS-APAC@telit.com](mailto:TS-APAC@telit.com)

Alternatively, use:

<http://www.telit.com/en/products/technical-support-center/contact.php>

For detailed information about where you can buy the Telit modules or for recommendations on accessories and components visit:

<http://www.telit.com>

To register for product news and announcements or for product questions contact Telit Technical Support Center (TTSC).

Our aim is to make this guide as helpful as possible. Keep us informed of your comments and suggestions for improvements.

Telit appreciates feedback from the users of our information.





## 1.4. Document Organization

This document contains the following chapters:

["Chapter 1: "Introduction"](#) provides a scope for this document, target audience, contact and support information, and text conventions.

["Chapter 2: "Chapter two"](#) gives an overview of the product.

["Chapter 3: "Chapter three"](#) document history.

## 1.5. Text Conventions



**Danger - This information MUST be followed or catastrophic equipment failure or bodily injury may occur.**



**Caution or Warning - Alerts the user to important points about integrating the module, if these points are not followed, the module and end user equipment may fail or malfunction.**



**Tip or Information - Provides advice and suggestions that may be useful when integrating the module.**

All dates are in ISO 8601 format, i.e. YYYY-MM-DD.



## 2. Telit Usb Driver Installer

### 2.1. Scope of the installer

This installer is intended for users who need to install the drivers for a specific Telit module in the following operating systems:

- Windows 8.1, both 32 and 64 bit;
- Windows 8, both 32 and 64 bit;
- Windows 7, both 32 and 64 bit;
- Windows Vista, 32 bit



---

**NOTE :**

Before using Telit installer you must remove all previous installation of modules driver from your system.

Old drivers are identified by U8.00.0X label in Control Panel - Uninstall Programs

---



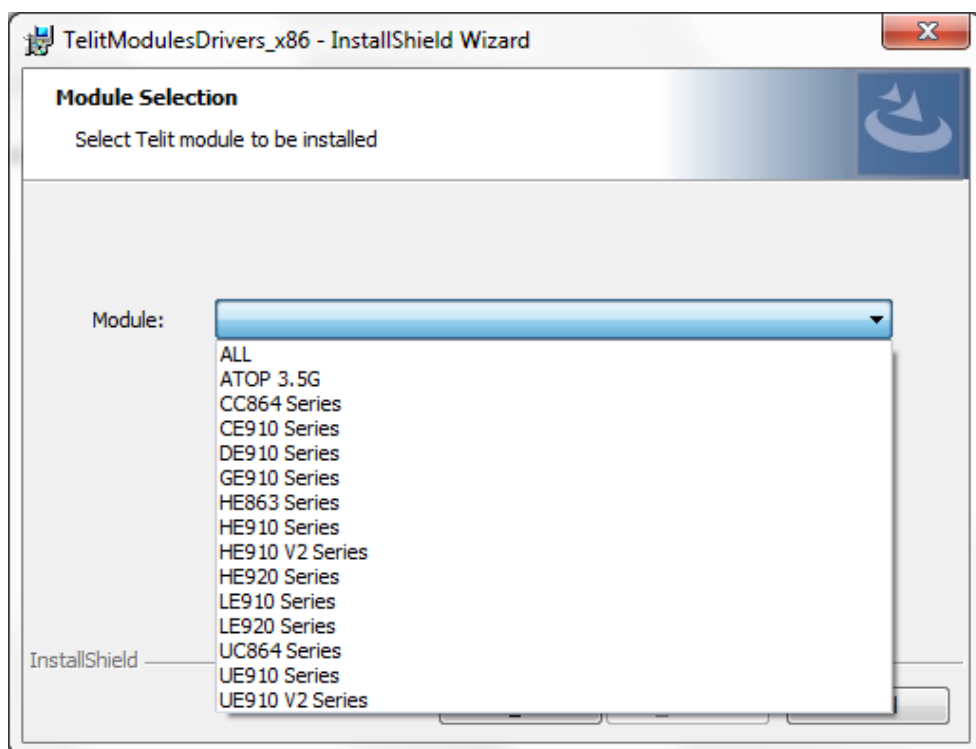


## 2.2. How to use the installer

According to the platform architecture, 32 or 64 bit, select the corresponding file:

- TelitModulesDriver\_x86 (32 bit);
- TelitModulesDriver\_x64 (64 bit).

After a welcome interface, select the module to be installed as described below:



Then click on Next button.

Choose between complete or custom setup.

- Complete: all the needed drivers for the selected module are installed. This is the suggested choice.
- Custom: the user can choose which driver should be installed.

Clicking Next the installation will start.

Once the installation is finished the device is ready for use.





---

**WARNING:**

Only for ATOP 3.5G module, two ports are not used in Windows Desktop operating systems, so drivers will be not installed and Device Manager will show a warning message

---



## **2.3. Enable/disable selective suspend**

Some Telit modem families allow to modify the modem Selective Suspend behavior.

### **2.3.1. Telit IMC based modems**

The Selective Suspend feature is supported for those modems with PIDs 0x0024 and 0x0025. The other USB configurations support operating systems different than Windows (e.g. Linux).

When supported, Selective Suspend can be enabled/disabled modifying the following registry key:

**SelectiveSuspendMode**

You can search it in the following path:

HKEY\_LOCAL\_MACHINE\SYSTEM\ControlSet001\

according to the following values:

- 0: disable SS
- 3: enable SS

### **2.3.2. Telit QC based modems**

Selective Suspend can be enabled/disabled modifying the following registry key:

**QCDriverPowerManagementEnabled**

HKEY\_LOCAL\_MACHINE\SYSTEM\ControlSet001\services\telitusbser

according to the following values:



- 0: disable SS
- 1: enable SS



---

**WARNING:**

Some QC based modem families do not properly support Selective Suspend and could misbehave. Make sure to use the feature with the latest firmware version available.

---



### 3. Document History

Revision	Date	Changes
0	2014-07-31	First issue
1	2014-01-16	Update label to UF.00.01; added enable/disable selective suspend chapter

