



# USB Driver

---

Installation Guide for H5 Devices

### USB Driver Installation Guide

For the following devices: MTSMC-H5-U, MTD-H5, MTPCIE-H5, MT100UCC-H5, MTC-H5-B03, MTCBA-H5-U

S000553, Version 1.5

### Copyright

This publication may not be reproduced, in whole or in part, without the specific and express prior written permission signed by an executive officer of Multi-Tech Systems, Inc. All rights reserved. **Copyright © 2013 by Multi-Tech Systems, Inc.**

Multi-Tech Systems, Inc. makes no representations or warranties, whether express, implied or by estoppels, with respect to the content, information, material and recommendations herein and specifically disclaims any implied warranties of merchantability, fitness for any particular purpose and non-infringement.

Multi-Tech Systems, Inc. reserves the right to revise this publication and to make changes from time to time in the content hereof without obligation of Multi-Tech Systems, Inc. to notify any person or organization of such revisions or changes.

### Trademarks

Multi Tech and the Multi-Tech logo are registered trademarks of Multi-Tech Systems, Inc. All other brand and product names are trademarks or registered trademarks of their respective companies.

### Contacting Multi-Tech

#### Knowledge Base

The Knowledge Base provides immediate access to support information and resolutions for all Multi-Tech products. Visit <http://www.multitech.com/kb.go>.

#### Support Portal

To create an account and submit a support case directly to our technical support team, visit: <https://support.multitech.com>.

### Support

Business Hours: M-F, 9am to 5pm CT

Country	By Email	By Phone
Europe, Middle East, Africa:	<a href="mailto:support@multitech.co.uk">support@multitech.co.uk</a>	+(44) 118 959 7774
U.S., Canada, all others:	<a href="mailto:support@multitech.com">support@multitech.com</a>	(800) 972-2439 or (763) 717-5863

### Warranty

To read the warranty statement for your product, visit [www.multitech.com/warranty.go](http://www.multitech.com/warranty.go). For other warranty options, visit [www.multitech.com/es.go](http://www.multitech.com/es.go).

### World Headquarters

Multi-Tech Systems, Inc.  
2205 Woodale Drive, Mounds View, MN 55112  
Phone: 800.328.9717 or 763.785.3500  
Fax 763.785.9874

# Contents

<b>Installing USB Drivers for Non-UIP H5 Devices .....</b>	<b>4</b>
Installing on Linux .....	4
Troubleshooting Linux.....	4
Windows Release Notes .....	5
Downloading the Windows USB Driver .....	5
Windows Notes .....	5
Installing on USB Host Powered Devices .....	5
Installing on Non-USB Powered Devices .....	5
Installing on Windows 8, 7 or Vista .....	6
Installing on Windows XP .....	7
Uninstalling Windows Drivers .....	8
Windows 8 .....	8
Windows 7 or Vista .....	8
Windows XP .....	8
Remove Microsoft Installed Drivers.....	8
Developer Note .....	9

# Installing USB Drivers for Non-UIP H5 Devices

---

## Installing on Linux

The Linux OS includes a generic USB driver for modems supporting CDC/ACM.

Multi-Tech tested the following Linux operating systems and all used port ttyACM0.

- Ubuntu 13.04
- Debian 6.0.6
- Fedora 15
- openSUSE 11.4
- CentOS 6.0

To install the device on any Linux Kernel with CDC/ACM support, connect USB cable from the device to a USB port on your computer. For most recent Linux distributions, there are no drivers to install.

If the operating system recognizes the modem, seven devices are created (assuming no other ACM values have been assigned):

- /dev/ttyACM0
- /dev/ttyACM1
- /dev/ttyACM2
- /dev/ttyACM3
- /dev/ttyACM4
- /dev/ttyACM5
- /dev/ttyACM6

Only the following devices can be used for AT commands:

- /dev/ttyACM0 (data port for PPP connections and AT commands)
- /dev/ttyACM3 (generic port for AT commands)

## Troubleshooting Linux

If Linux does not create devices, check for the kernel module:

```
# lsmod | grep cdc_acm
```

If entries aren't found, load the kernel module with root privileges:

```
# modprobe cdc-acm
```

If this returns an error response, such as # FATAL: Module cdc-acm not found, the kernel module is not on your system. You will need to build the driver.

## Building a Linux Driver

If your system is missing the Linux driver:

1. Retrieve the appropriate kernel source code version for your system. This should be in your OS distribution package. Unpack it.

2. In its root directory type: **# make menuconfig**
3. Configure the kernel according to your system configuration,
4. Browse to menu **Device Driver > USB Support** and select **USB Modem (CDC ACM) support**.
5. To start the build once configured, type **# make**

The kernel module cdc-acm.ko is in the directory drivers/usb/class. If the kernel was built previously, compile the module by typing:

```
# make M=drivers/usb/class
```

To load the module use modprobe or insmod.

## Windows Release Notes

We tested h5-u-windriver\_8.00.04.zip driver on the following Windows operating systems.

- **Windows 8 x86 and x64, Windows 7 x86 and x64, Vista x86 and x64, XP x86 and x64, Windows Server 2012, Windows Server 2008 x86 and x64, and Windows Server 2003 x86**
  - Drivers install correctly, but may require .NET Framework version 3.5 or older.
  - After installing the driver for this device, the device may not be available when Windows comes out of a sleep/hibernate state. To correct this issue, unplug the device from the USB port and then plug it back in to the same port.
- **Windows Server 2003 x64**
  - Not supported with version 8.00.04.

## Downloading the Windows USB Driver

If you haven't downloaded the driver:

1. Go to the Multi-Tech Support page, [www.multitech.com/support.go](http://www.multitech.com/support.go) and select your product from the Product Families drop down list.
2. Click **Drivers**.
3. Select **h5-u\_windriver\_8.00.04.zip** and **Save** the driver to your computer.
4. Extract the files to your computer.

## Windows Notes

### Installing on USB Host Powered Devices

(MTD, MTC, MTCBA or MT100UCC)

When you connect a USB host powered device to a computer through a USB cable, the Windows **Add New Hardware Wizard** may display **Cannot Install this Hardware**. If this occurs, click **Finish**. Windows detects additional devices and prompts you to install them.

### Installing on Non-USB Powered Devices

(MTSMC)

Turn on the device and wait 15 seconds before connecting the USB cable. If you connect the USB cable before supplying power to the device, the Windows **Add New Hardware Wizard** may appear and show **Cannot Install this**

**Hardware.** If this occurs, click Finish. Windows detects additional devices and prompts you to install the additional devices. If Windows does not detect new device, unplug the USB cable, turn the device off and on, wait 15 seconds, insert the USB cable, and install devices when prompted.

## Installing on Windows 8, 7 or Vista

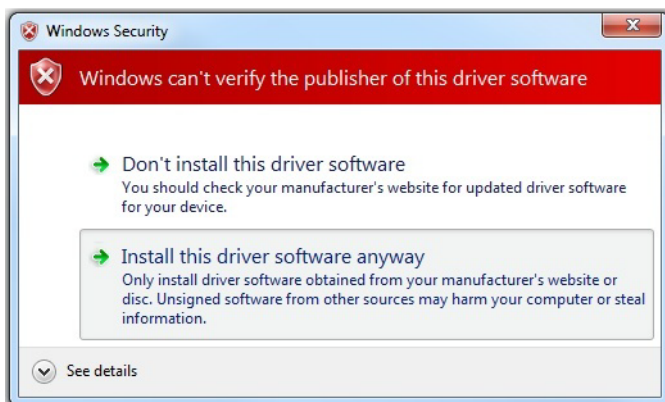
This process installs multiple drivers and ports.

**Note:** If you previously installed USB drivers for this device, uninstall them before installing or re-installing this driver. Uninstall all existing drivers for this device. Refer to Uninstall Windows Drivers for details.

Before you connect the device (disconnect the device if you connected it):

**CAUTION:** If you connected the device before installing the drivers, Windows may install drivers automatically. Your device may not operate correctly with these drivers. Uninstall the drivers before proceeding. See Remove Microsoft Installed Drivers for details.

1. Go to the location where you extracted the driver and open the **H5-USB\Driver** folder.
2. Right-click on **TelitUSBInstaller\_In\_U8.00.04.exe** and select **Run as Administrator**.
3. Click **Yes** or **Allow** to allow the installer to make changes to your computer.
4. Click **Next** and follow the instructions in the installation wizard.
5. Click **Install this driver software anyway** each time this screen appears.



6. Click **Finish**.
7. Connect USB cable from the device to a USB port on your computer. Windows indicates when the device is ready to use.

## Installing on Windows XP

This process installs four drivers.

**Note:** If you previously installed USB drivers for this device, uninstall them before installing or re-installing this driver. Uninstall all existing drivers for this device. Refer to Uninstall Windows Drivers for details.

Before you connect the device (disconnect the device if you connected it):

1. Go to the location where you extracted the driver and open the **H5-USB\Driver** folder.
2. Right-click on **TelitUSBInstaller\_In\_U8.00.04.exe** and select **Run**.
3. Click **Next** and follow the instructions in the installation wizard.
4. Click **Continue Anyway** each time this screen appears.



5. Click **Finish**.
6. Connect USB cable from the device to a USB port on your computer. After it detects the hardware, Windows opens the New Hardware Wizard.
7. Select **No, not this time** and click **Next**.
8. Select **Install the software automatically (Recommended)** and click **Next**.
9. Select **Finish**.
10. Repeat Steps 7-9 for each additional New Hardware Wizard. Windows indicates when the device is ready to use.

## Uninstalling Windows Drivers

**Note:** Disconnect the device before uninstalling drivers.

### Windows 8

To uninstall drivers from Windows 8:

1. Open Windows **Programs and Features**.
2. Uninstall **Windows Driver Package – Intel Mobile Communications (flashusb) USB**.
3. Uninstall the other **Telit modems, Telit ports, and Telit USB drivers**.

### Windows 7 or Vista

To uninstall drivers from Windows 7 or Vista:

1. Open **Programs and Features** from the Windows Control Panel.
2. Uninstall the **Windows Driver Package – Telit (Telit\_COM) Modem**.
3. Uninstall the other **Telit modems, Ports and USB**.

### Windows XP

To uninstall drivers from Windows XP:

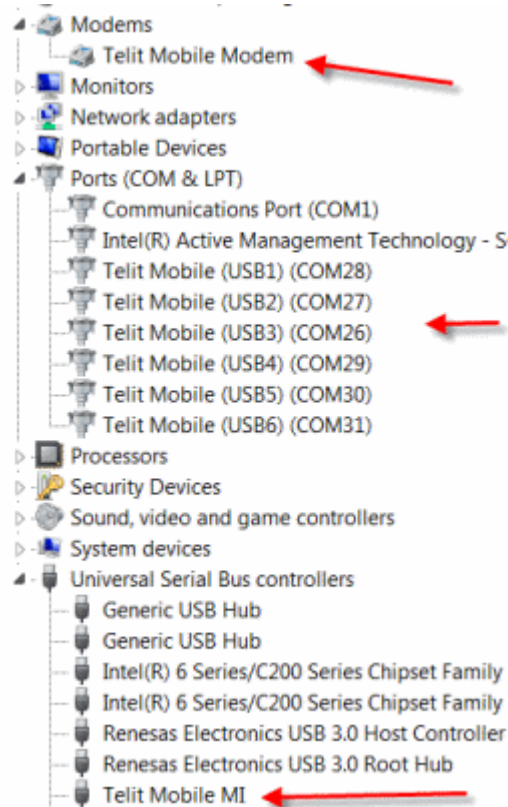
1. Open the **Control Panel** and go to **Add or Remove Programs**.
2. Uninstall **Windows Driver Package – Telit (Telit\_COM) Modem**.
3. Uninstall the other **Telit modems, Ports and USB**.

## Remove Microsoft Installed Drivers

If using Windows 7 and connect the device before installing drivers, Windows Update automatically installs drivers. Your device may not operate correctly with these drivers. To remove these drivers:

1. With the device plugged in, open the **Device Manager**.





2. Right-click on the Telit Mobile Modem and select **Uninstall**.
3. Select **Delete the driver software for this device** and click **OK**.
4. Repeat the removal steps to uninstall each Telit port and the Telit Universal Serial Bus Control.

## Developer Note

By default each time an H5 device with a different IMEI value is connected using this USB driver, the operating system will not require searching for the drivers again and uses the same ports created in a previous installation. To prevent this, use the utility included with the driver download to manage port creation as follows.

To enable USB IMEI identification, where the operating system creates a new set of ports with different COM enumeration for each H5 device with a different IMEI value:

1. Uninstall the driver if already installed.
2. Double-click **H5\_enable\_USB\_IMEI\_indentification.reg** in the folder where you extracted the driver files.
3. Install the driver as normal.

To disable USB IMEI identification (driver default setting):

1. Uninstall the driver if already installed.
2. Double-click **H5\_disable\_USB\_IMEI\_indentification.reg** in the folder where you extracted the driver files.
3. Install the driver as normal.